



From February 1st, 2017 SAMES Technologies SAS becomes SAMES KREMLIN SAS
A partir du 1/02/17, SAMES Technologies SAS devient SAMES KREMLIN SAS

SAMES  **KREMLIN**



User manual

e-Jet2 equipment

e-Jet2

SAS SAMES Technologies. 13 Chemin de Malacher -
Inovallée - CS 70086 - 38243 Meylan Cedex France
Tel. 33 (0)4 76 41 60 60 - Fax. 33 (0)4 76 41 60 90 - www.sames.com

All communication or reproduction of this document, in any form whatsoever and all use or communication of its contents are forbidden without express written authorisation from SAMES Technologies.

The descriptions and characteristics mentioned in this document are subject to change without prior notice.

© SAMES Technologies 2012



WARNING : SAS Sames Technologies is registered with the Ministry of Labour as a training institution.

Throughout the year, our company offers training courses in the operation and maintenance of your equipment.

A catalogue is available on request. Choose from a wide range of courses to acquire the skills or knowledge that is required to match your production requirements and objectives.

Our training courses can be delivered at your site or in the training centre at our Meylan head office.

Training department:

Tel. 33 (0)4 76 41 60 04

E-mail: formation-client@sames.com

SAS Sames Technologies operating manuals are written in French and translated into English, German, Spanish, Italian and Portuguese.

The French version is deemed the official text and Sames will not be liable for the translations into other languages.

e-Jet2 equipment

1. Safety Regulations - - - - -	4
2. Description - - - - -	5
2.1. General presentation	5
2.2. Control panel presentation	6
3. Characteristics - - - - -	7
3.1. General characteristics	7
3.2. Pneumatic characteristics	7
4. Operation - - - - -	8
4.1. With vibrating table	8
4.2. With fluidization tank	8
5. Tools - - - - -	8
6. Installation - - - - -	9
6.1. Vibrating table version	12
6.2. Tank version	13
6.3. Common	13
6.4. Vibrating table connection	14
6.4.1. Single version	14
6.4.2. Dual version	15
6.5. Fluidization tank connection	16
6.5.1. Single version	16
6.5.2. Dual Version	17
6.6. Connection of "Mach-Jet Gun" and mains plug	18
7. Using the equipment "eJet2" - - - - -	19
7.1. Powder coating	19
7.2. Color change	20
7.2.1. Vibrating table version	20
7.2.2. Tank version	23
8. Maintenance- - - - -	24
9. Spare parts- - - - -	25
9.1. "e-Jet2" equipment, vibrating table version	25
9.1.1. Cart, vibrating table version	28
9.1.2. Hose and union assembly	33
9.1.3. Fluidization tube	34
9.1.4. Arm support	35
9.2. Dual "e-Jet2" Equipment, vibrating table version	36
9.2.1. Dual arm support	37
9.3. "e-Jet2" equipment, tank version	38
9.3.1. Cart, tank version	41
9.3.2. Hose and union assembly	43
9.3.3. Tank	44
9.4. Dual "e-Jet2"equipment, tank version	45

1. Safety Regulations



WARNING : This document contains links to the following user manuals:

- [see RT Nr 6426](#) for the CS 130 powder pump.
- [see RT Nr 6336](#) for the “Mach-Jet” spray gun and “CRN 457” control module.



WARNING : The “e-Jet2” cart is designed to equip powder-paint spraying devices only.

This device may be dangerous if it is not used in compliance with the safety regulations specified in this manual.

Operating temperature range: From 0 °C to 40 °C (32 °F to 104 °F).

- The “e-Jet2” cart and the tank must always be installed and used in areas where there is no risk of explosion.
- It is essential to connect the ground thimble on the cart to the ground system thimble of the powder-coating installation (or powder-coating booth) to guarantee the safety of operators and correct operation of the powder-coating equipment.
- When a fluidization tank is used, it is essential to extract fumes to an area where the powder-charged air is filtered (usually, this is the powder-coating booth).
- When a vibrating table is used, the plastic bag containing the powder must be tightly wrapped around the plunger tube to avoid any escape of powder.
- All powder filling operations of tank must be carried out in a ventilated area designed for the purpose and under no circumstances anywhere near the cart.
- The tank is normally used installed on the lower part of the cart. It is imperatively necessary to connect the two banana plugs of grounding on the tank lid. The hoses of fluidization air and smoke aspiration air also take part to connect the tank to the ground.
- If the tank is used away from the cart, it is essential to connect the tank to the ground system electrically on the level of its lid.
- Under no circumstances may the cart be used to carry or transport loads other than the powder tank or a powder box with a maximum weight of 30 kg on the vibrating table.
- Skin-contact or inhalation of products used with this equipment may be dangerous for personnel (cf.: Safety sheets for products used).

2. Description

2.1. General presentation

With its compact size, the cart of the equipment "e-Jet2" remains very stable and easy to transport in all circumstances thanks to its gravity center lowered, to its large back wheels and its two front directional wheels.

The equipment "e-Jet2" includes the **CRN 457** control module with ideal height and tilted in a optimized way for the greatest comfort of the operator. The swivelling of the screen on the operator side is done easily thanks to the directional wheels of the cart.

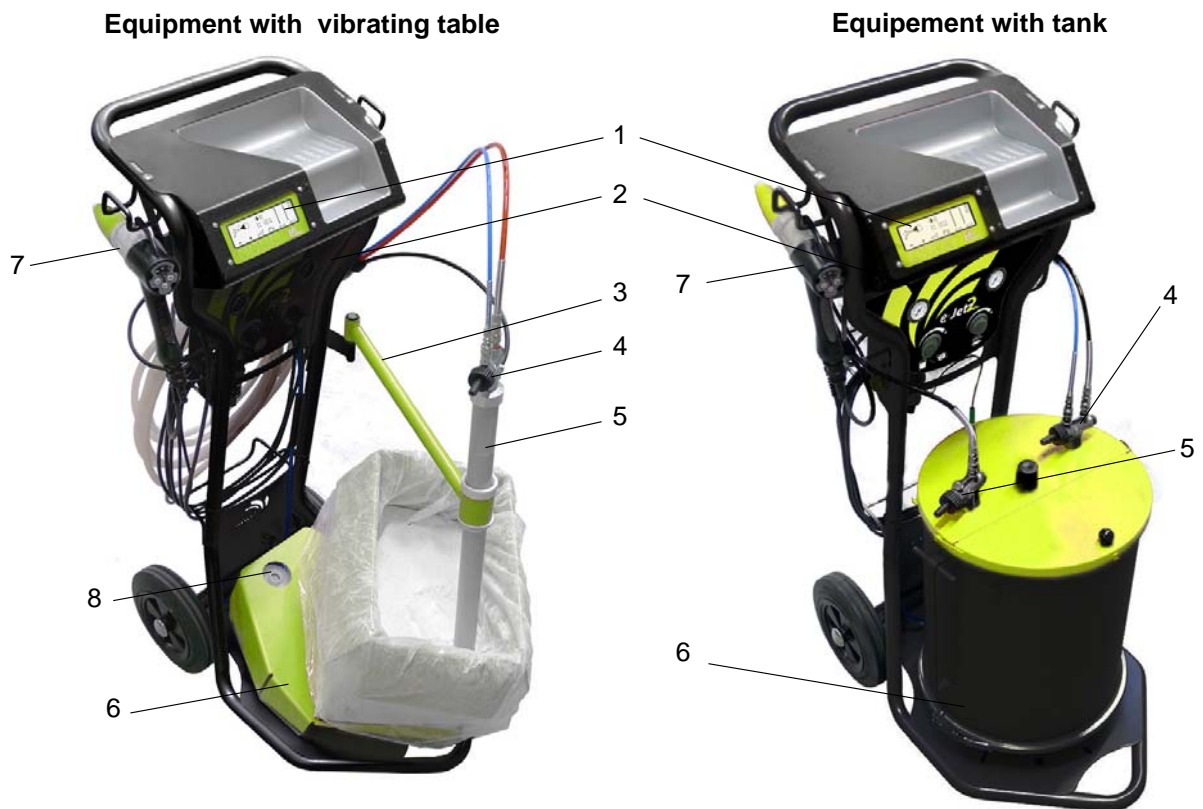
The **Mach-Jet gun** can be hung with good height, on the two sides of the cart.

Provided with many fast couplings of air, its use and its maintenance are optimized compared to the previous generations.

Finally, numerous arrangements are planned for the various phases of use of the equipment.

Declined in two versions:

- **Vibrating table:** it is intended for the frequent color changes, it is then equipped with a vibrating table, with a removable arm support and a cleaning system integrated: **Fast Clean**.
- **Tank :** it is intended for less color changes and for delicate powders which require a complete fluidization, it is then equipped with a fluidised tank.



Equipment with vibrating table	
1	CRN 457 control module
2	Control panel
3	Arm
4	Powder pump
5	Plunger tube
6	Vibrating table
7	"Mach-Jet" spray gun
8	Fast Clean

Equipment with tank	
1	CRN 457 control module
2	Control panel
-	-
4	Powder pump
5	Pump (fume extraction)
6	Tank
7	"Mach-Jet" spray gun
-	-

2.2. Control panel presentation



Reference	Function
1	Fume-extraction pressure adjustment and reading (tank)
	Vibrator supply pressure adjustment and reading (vibrating table)
2	Fluidization pressure adjustment and reading (tank or plunger tube)

3. Characteristics

3.1. General characteristics

The cart structure is designed to receive:

- A box with a maxi. weight 30 kg of powder placed in a tilted position on a vibrating table.
- A tank with a capacity of approximately 35 litres of fluidised powder.

"e-Jet2" cart dimensions (HxLxW)	1,220 x 480 x 770 mm
Approximate weight (without powder)	40 kg.

3.2. Pneumatic characteristics

Characteristics of the compressed-air supply according to standard NF ISO 8573-1:

Maximum dew point at 6 bar (90 psi)	Class 4, i.e. +3°C (38°F)
Maximum particle-size of solid pollutants	Class 3, i.e. 5 µm.
Maximum oil concentration	Class 1, i.e. 0.01 mg/m ₀ ³ *
Maximum concentration of solid pollutants	Class 3, i.e. 5 mg/m ₀ ³ *

* : Air flow rate values are given for a temperature of 20°C (68 °F) at atmospheric pressure of 1,013 mbar.

The filter installed on the "e-Jet2" cart is used to ensure correct operation of the equipment in the case of accidental non-compliance with compressed-air filtering recommendations.

"e-Jet2" equipment air-supply pressure	7 bar +/- 1 bar (*)
Maximum flow rate	18 m ³ /h maximum



WARNING : (*) Pressure in excess of 8 bar may cause operating malfunctions.

Maximum flow rate:

Air flow rate supplied by CRN 457 control module	Vibrating table 1 powder pump	Tank 1 powder pump + 1 fume extraction
"Fluidization-air," vibrator-air supply or fume extraction air-flow rate	12 m ³ /h maximum, of which 0.1 m ³ /h for fluidization	12 m ³ /h maximum, of which 6 m ³ /h for smoke aspiration
Powder "driving" air flow rate	6 m ³ /h maximum	6 m ³ /h maximum

4. Operation

4.1. With vibrating table

The powdered paint remains in its original box with a weight of approximately 30kg. The box is placed on the vibrating table.

The vibrator vibrates the table and enables the fluidization head to reach the bottom of the powder box. The operation of the vibrator is activated by action on the spray gun trigger. The fluidization nozzle, supplied with compressed air, "fluidises" the powdered paint.

The powdered paint, thus fluidised, is then driven by an air jet from the powder pump to the spray gun to which it is connected by a powder-carrying hose.

4.2. With fluidization tank

The powder contained in the tank with a capacity of approximately 35l useful or 20kg of fluidised powder, is fluidised by an upward flow of air, distributed evenly by a porous plate located at the bottom of the tank. The powdered paint, thus fluidised, is then driven by an air jet from the powder pump to the spray gun to which it is connected by a powder-carrying hose. An additional pump is planned for the aspiration of smokes generated by the fluidization of the powder.

5. Tools

No specific tools.

6. Installation

The cart is made in two parts, a base plate and a high structure.

- **Step 1:** Install the structure on the base plate while having previously removed the two screws, washers and nuts located on the base plate.
- **Step 2:** Maintain these two parts using the two screws, washers and nuts. Sufficiently tighten in order to eliminate the clearance between the structure and the base plate without deforming the tubular elements.



Steps 1 and 2

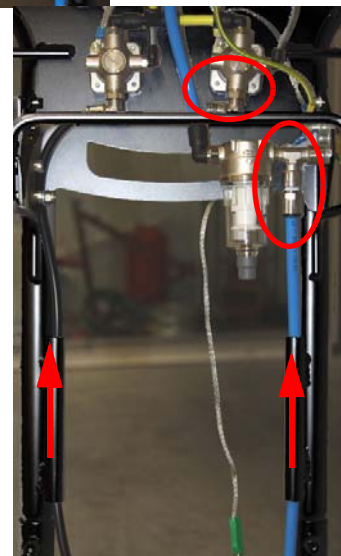
- **Step 3:** Connect the main air supply hose to the filter while passing it previously into the guide tube. Into the second guide tube, pass the air supply hose of the vibrator (vibrating table version), or the tank fluidization air hose (tank version), and connect to the regulator corresponding.



Vibrating table version

Step 3

Tank version



- **Step 4:** Secure the **CRN 457** control module on the cart.
Center the screen of the module to the access window et screw the module by its front face using the four selftapping screws. The module must be flushed.



Nota: The security and the remaining into position of the module are done using the four screws, washers and 1/4 turn nut and an allen wrench.

Equip previously the four provided screws with washers and 1/4 turn nut (attention: 1/4 turn thread nut must be fitted flushed and in the direction indicated to ensure its function; a locating device on the cart allows to check if the directory of nut fitting has to be respected).



Put in place the 1/4 turn nut on the screw in the grooves of the CRN 457 box, the flat washers being placed outside,



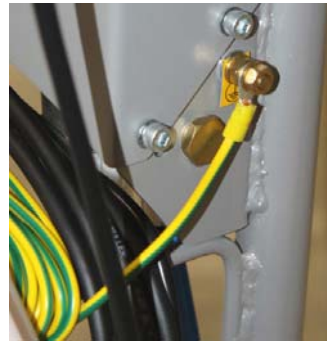
and move the screw at the level of the most narrow part of the print .
Tighten strongly using an allen wrench.



Check visually that the 1/4 turn nut is placed perpendicular to the groove of the CRN 457.



- **Step 5:** Connect the ground cable (length: 5m) to the grounding screw located on the side of the cart. The other end of the ground cable has to be imperatively connected to a part of the booth electrically connected to the ground .



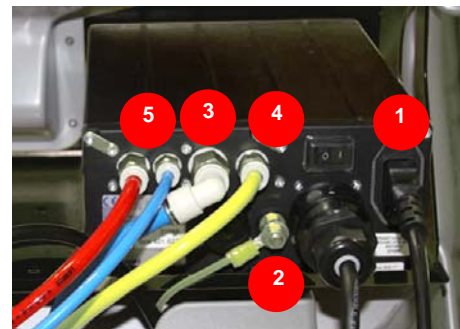
- **Step 6:** Connect the 220V main power cable to the back of the CRN457 (1) ([see § 6.6 page 18](#)).

Connect the CRN457 to the ground on its ground screw via the ground thimble (2).

- **Step 7:** Connect the main pneumatic supply union of the CRN457 (3).

Connect the pneumatic output auxiliary which supplies the regulators to the yellow hose (4).

- **Step 8:** The red (air injection supply) and blue (air dilution supply) hoses included in the hose and union assembly provided with the cart must be connected to the outputs of the CRN457 (5); these two hoses as their quick unions must pass by the passage of cable.



Ensure the positioning of these hoses in the passage designed for this purpose using the velcro band provided.

6.1. Vibrating table version

- **Step 1:** Install the arm support on the axis of the cart.
The arm must follow the lead angle of the vibrating table.



Step 1

- **Step 2:** Place the plunger tube in the arm support and install the powder pump on the plunger tube.

Step 2



- **Step 3:** Connect the powder pump.
The black polyurethane anti static hose is connected right side of the cart on the plunger tube via its quick union to the output of the corresponding regulator.
Ensure the positioning of the hose in the passage designed for this purpose using the velcro band provided.



Step 3

6.2. Tank version

- **Step 1:** Install the tank on the base plate between the centering studs.
- **Step 2:** Put in place the powder aspiration tube on the base of the lid, right side.
Fit the pump base without tube on the left side of the lid.
- **Step 3:** Install the CS130 powder pump (pump with two unions) on the right side of the tank and the CS130 air pump (one union) on the left side.
- **Step 4:** Connect the lid of the tank to the ground thimble of the body and to the the thimble of the ground strip of the cart located on the front face. It must pass through the opening designed for this purpose so that it remains always visible.
- **Step 5:** Connect the quick union of fluidization air supply (black polyurethane anti static hose) at the bottom of the tank.
The black polyurethane anti static hose of air pump supply (smoke aspiration) is connected to the left on the cart on the air pump side injection via the quick union and on the output of the corresponding regulator; the hose must pass by the cable passage designed for this purpose.
Ensure the positioning of this hose using the velcro band provided.

6.3. Common

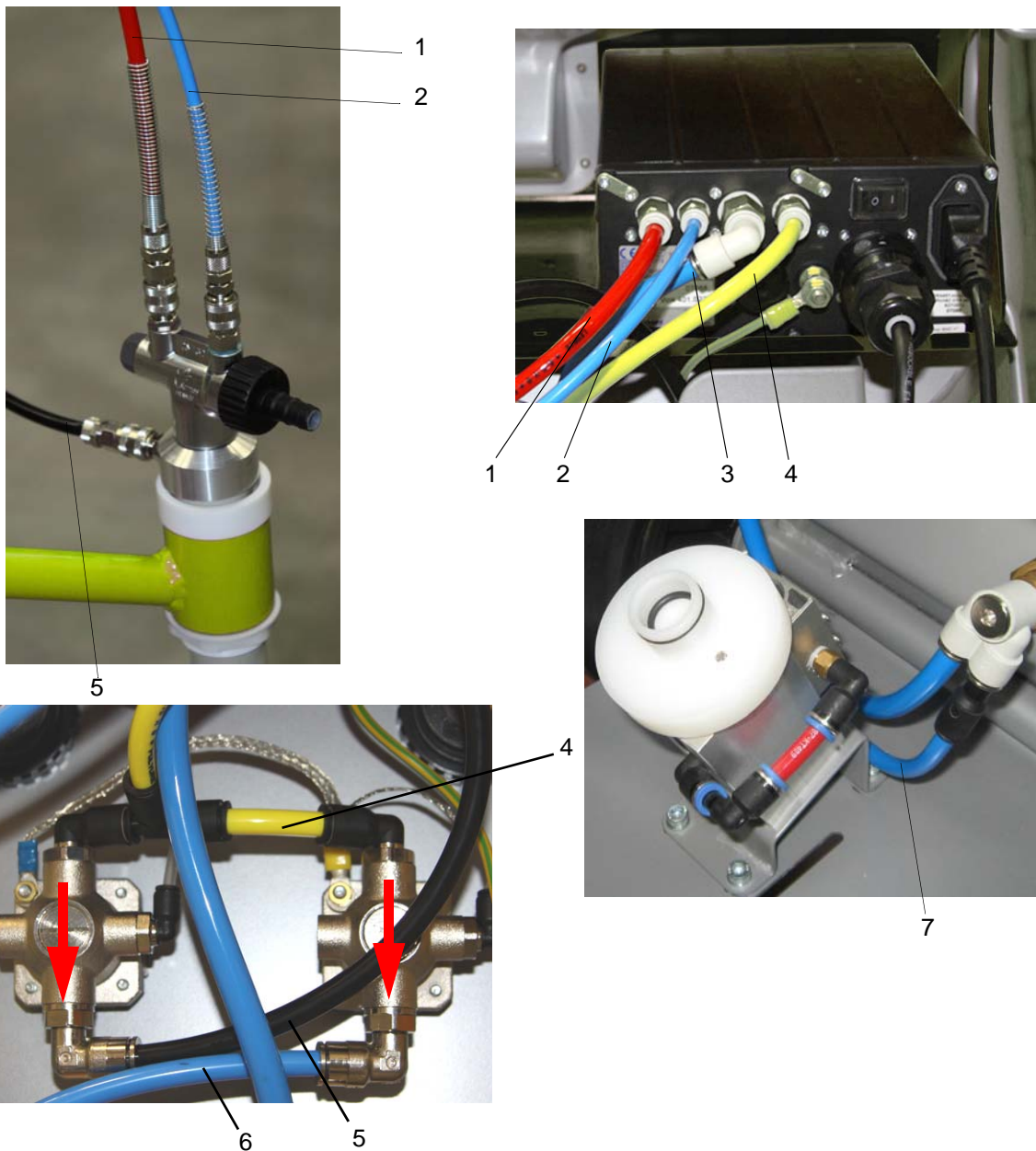
For the two versions:

- Pass the low voltage plug on the cart, connect it ([see § 6.6 page 18](#)), install the spray gun on one of the two fixing hooks
- Roll up the low voltage cable and the powder tube assembly et tuyau poudre back side of the cart on the roller designed for this purpose.
- Connect the powder tube between the pump and the spray gun and attach the low voltage cable by beginning towards the spray gun using the velcro bands

The equipment is ready to operate.

6.4. Vibrating table connection

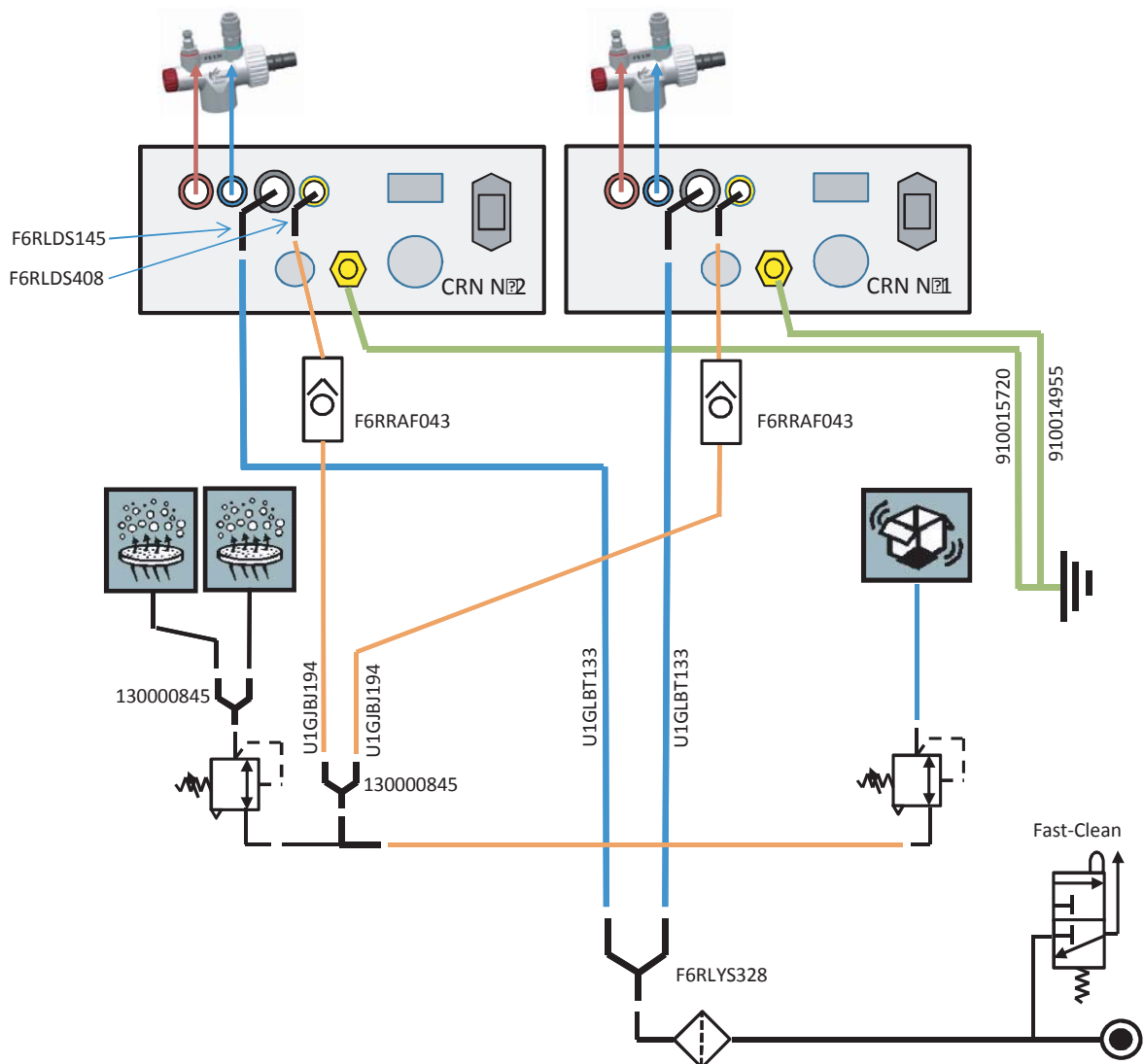
6.4.1. Single version



Reference	Hose name	Hose characteristics
1	Injection air powder pump	Red Polyurethane hose, dia: 8 mm
2	Dilution air powder pump	Blue Polyurethane hose, dia: 6 mm
3	General air supply	Blue Polyurethane hose, dia.: 10 mm
4	Regulator air suply	Yellow Polyurethane hose, dia.: 8 mm
5	Fluidization air	Black anti-static hose - dia: 8 mm
6	Vibrator air supply	Blue Polyurethane hose, dia.: 8 mm
7	Fast Clean air supply	Blue Polyurethane hose, dia.: 8 mm

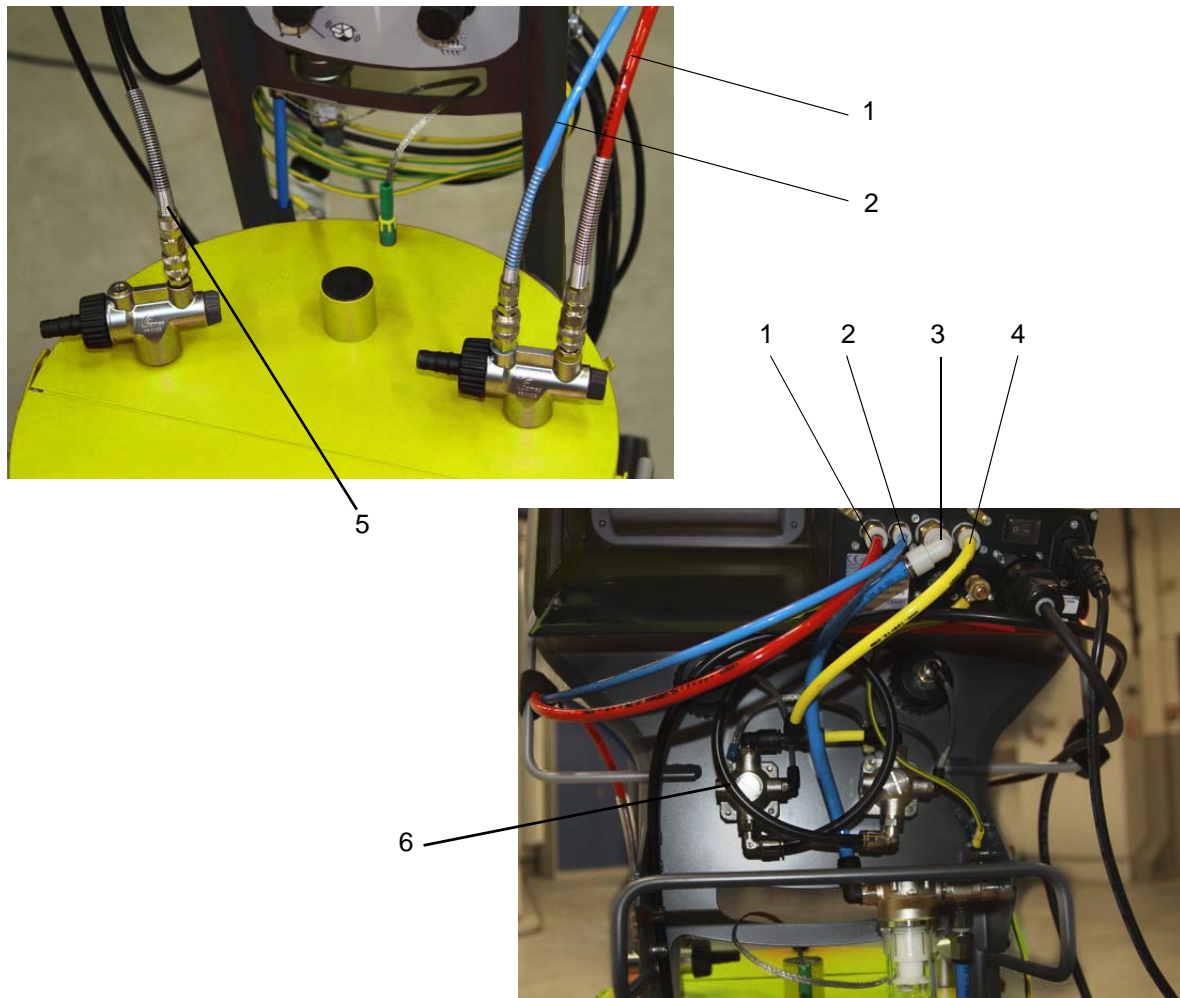
6.4.2. Dual version

"e-Jet2" equipment also exists in dual version with vibrating table. It is equipped with a "Mach-Jet gun" 6 m-version and a "Mach-Jet gun" 12m-version with a system of individual pumping in CS 130 and fluization tube and two CRN 457 control modules.



6.5. Fluidization tank connection

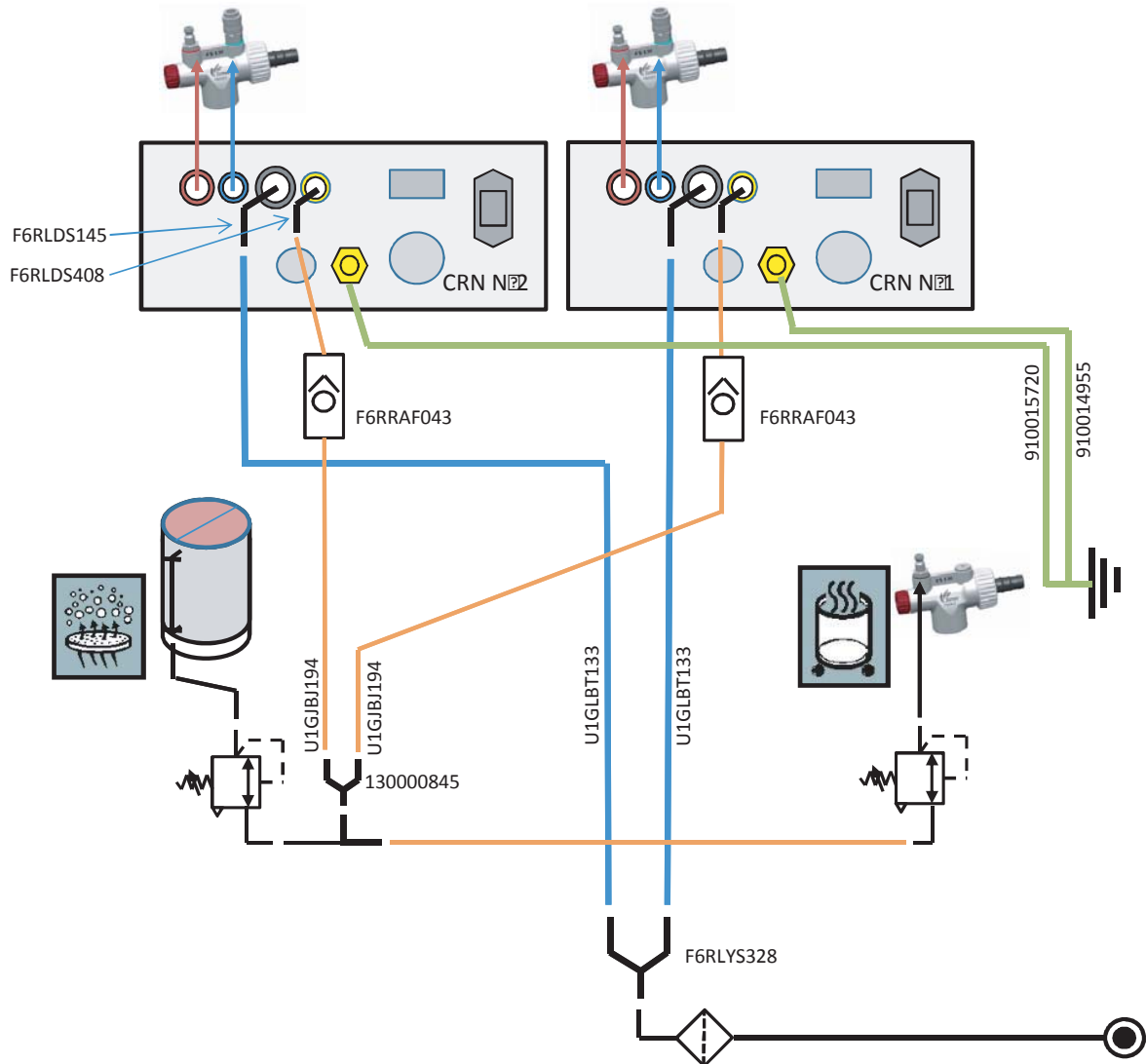
6.5.1. Single version



Reference	Hose name	Hose characteristics
1	Injection air powder pump	Red Polyurethane hose, dia: 8 mm
2	Dilution air powder pump	Blue Polyurethane hose, dia: 6 mm
3	General air supply	Blue Polyurethane hose, dia:10 mm
4	Regulator air suply	Yellow Polyurethane hose, dia:: 8 mm
5	Fume extraction air supply	Black anti-static hose - dia: 8 mm
6	Fluidization air	Black anti-static hose - dia: 8 mm

6.5.2. Dual Version

"e-Jet2" equipment also exists in dual version with fluidized tank provided with a filling trapdoor equipped with two powder pumps and one smoke aspiration pump. It is equipped with a "Mach-Jet gun" 6 m-version and a "Mach-Jet gun" 12m-version and two CRN 457 control modules.



6.6. Connection of “Mach-Jet Gun” and mains plug

Connect the spray gun to plug “A” on the back of the control module ([see RT Nr 6336](#)).



WARNING : To avoid damaging the plug, make sure that the spray gun positioning pin is opposite the positioning pin on the CRN 457 base plate.

The plug is locked by pushing it into the socket; comply with positioning pins: The flat on the spray gun cable plug must be at the top, a “click” must be heard. The click indicates that the plug is correctly locked in position.

The plug is unlocked by pulling it out of the socket.



Positioning pins

The mains power cable is connected to the back of the CRN 457 module (see figure below). It is imperative to check that the plug sector is connected to the ground.



Mains power cable

Plug “A” for the spray gun

7. Using the equipment "eJet2"

7.1. Powder coating

The equipment has previously been installed according to the safety rules ([see § 1 page 4](#)) and the instructions indicated ([see § 6 page 9](#)), follow the steps described below:

- **Step 1:** Connect the ground cable of the cart to a conducting and connected ground part of the application booth; the ground potential must be equal to the potential of the part to be painted.
- **Step 2:** Supply electrically and pneumatically the equipment.
- **Step 3:** Place an open powder box on the vibrating table or fill the tank with powder.
- **Step 4:** Put in operation the CRN 457 control module ([see RT Nr 6336](#)) (switch located in the back of the module). Configure the CRN 457 control module ([see RT Nr 6336](#)), operation with vibrating table or tank.
- **Step 5:** Choose the type of needle and select on the spray gun or on the control module the suitable high voltage characteristic.
- **Step 6:** Choisir au pistolet ou à l'écran un débit poudre.
- **Step 7:** Direct the needle of the spray gun towards the booth and the part to be painted and activate the trigger; adjust the regulator of the vibrator (recommended pressure between 1 and 3 bar maximum) and the fluidization (pressure approximately of about 0,2 bar and 2 bar) of the plunger tube for the vibrating table version and the regulator of smoke aspiration and tank fluidization for the tank version.
- **Step 8:** Wrap the plastic bag containing the powder around the plunger tube ([see § 1 page 4](#)).
- **Step 9:** ([see RT Nr 6336](#)) Adjust the required powder flow rate on the spray gun or on the control module.

Note: For tank version only, after releasing the spray gun trigger, the smoke aspiration and the fluidization systems are supplied with air approximately 30 minutes.

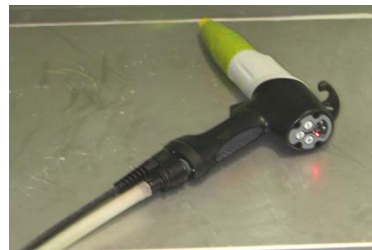
7.2. Color change

7.2.1. Vibrating table version

- **Step 1:** Extract the fluidization tube from the box by leaving it in the arm support and swivel the arm support on the outside of the cart.



- **Step 2:** Place the spray gun in the directory of the ventilated booth.



- **Step 3:** Select the cleaning mode either from the spray gun or from the control module.



Activate the cleaning mode to the screen.



- **Step 4:** Once the emptied hose, the cleaning mode remaining activate, take out the fluidization tube equipped with the pump and connect the bottom of the tube on the Fast-Clean.



WARNING : Maintain the hand on the pump.

- **Step 5:** Press several time in a prolonged way until there is no more powder in the spray gun needle. The whole of the paint circuit is rinsed.



- **Step 6:** Disactivate the cleaning mode to the screen. Disconnect the pump from the fluidization tube and leave the pump connected on the cart.



- **Step 7:** Take down the arm support from the cart then clean the arm support as well as the outside of the tube of fluidization into the booth using an air blower assembly.



- **Step 8:** Remove the powder box and install the box of following color.



- **Step 9:** Re-install the arm, the fluidization tube, the pump and plunge the arm in the new color.

Summary:

Fluidization Tube in the powder box	Color 1												Color 2
Fluidization Tube out of powder box													
Entry/Exit the cleaning mode (from the spray gun or the control module)													
Activate / Disactivate the cleaning mode (from the control module)													
Action Fast Clean													
Blowing the outside of the fluidization tube and the arm													



WARNING : Not disconnect the supply as well as the unions from the pump during the cleaning mode activated.

7.2.2. Tank version

- **Step 1:** Disconnect the pumps from the tank.
- **Step 2:** Disconnect the ground thimbles from the lid.
- **Step 3:** Disconnect the fluidization air supply from the tank.
- **Step 4:** Remove the lid equipped with its plunger tube.
- **Step 5:** Empty the tank.
- **Step 6:** Clean using an air blower assembly then a clean rag, the lid, the plunger tube, the tank body and the porous plate.
- **Step 7:** If necessary, disassemble the low part of the tank by actuating the flange for a separate and complete cleaning of the porous plate and its seal.
- **Step 8:** Place the spray gun in the directory of the ventilated booth.
- **Step 9:** Select the cleaning mode either from the spray gun or from the control module. Activate the cleaning mode to the screen.
- **Step 10:** Deactivate the cleaning mode to the screen.
- **Step 11:** With an air blower assembly, clean the air and powder pumps as well as the hoses associated.
- **Step 12:** Re-install the assembly.
- **Step 13:** Fill the tank with a new color passing through the access traps of the lid.

8. Maintenance



WARNING : Cleaning operations must only be carried out using compressed air (maximum pressure: 2.5 bar) (an air blower can be fitted to the cart as an option) and a wet cloth. Neither water nor solvents must be used to clean the equipment (spray gun and control module). The equipment must be cleaned at the end of each shift.

- Check regularly the air filter cartridge replace if necessary.
- If there is water or oil in the filter, dump the bowl and check the air dryer or oil remover in the installation. To dump the bowl, unscrew the black plastic part located underneath the filter bowl.

9. Spare parts

9.1. "e-Jet2" equipment, vibrating table version



Europe version

Item	Part Number	Description	Qty	Sale unit	Maintenance level for Spare part (*)
	910014683	e-Jet2 equipped with vibrating table 6m	1	1	3
	910014684	e-Jet2 equipped with vibrating table 12m	1	1	3
1	-	Cart (see § 9.1.1 page 28)	1	-	-
2	1523297	CRN 457 control module (see RT Nr 6336)	1	1	3
3	910014736	Hose and union assembly (see § 9.1.2 page 33)	1	1	2
4	910013775	Powder pump (see RT Nr 6426)	1	1	3
5	910013650	Arm support (see § 9.1.4 page 35)	1	1	3
6	910013651	Fluidization Tube (see § 9.1.3 page 34)	1	1	3
7	1524463	“Mach-Jet Gun” spray gun (see RT Nr 6336)	1	1	3
	1524463-12	“Mach-Jet Gun” spray gun (see RT Nr 6336)	1	1	3
8	910015302	CRN 457 securing kit on cart	1	1	3
		Not shown			
	E4PCAL206	Main power cable 10A 250V	1	1	3
	842635	5-metre ground cable, thimble dia.: 6	1	1	3

(*)

Level 1: Standard preventive maintenance

Level 2: Corrective maintenance

Level 3: Exceptional maintenance

"US" Version

Item	Part Number	Description	Qty	Sale unit	Maintenance level for Spare part (*)
	910014687	e-Jet2 equipped with vibrating table 6m	1	1	3
	910014688	e-Jet2 equipped with vibrating table 12m	1	1	3
1	-	Cart (see § 9.1.1 page 28)	1	-	-
2	1523297	CRN 457 control module (see RT Nr 6336)	1	1	3
3	910014736	Hose and union assembly (see § 9.1.2 page 33)	1	1	2
4	910013775	Powder pump (see RT Nr 6426)	1	1	3
5	910013650	Arm support (see § 9.1.4 page 35)	1	1	3
6	910013651	Fluidizing Tube (see § 9.1.3 page 34)	1	1	3
7	1524463	"Mach-Jet Gun" spray gun (see RT Nr 6336)	1	1	3
	1524463-12	"Mach-Jet Gun" spray gun (see RT Nr 6336)	1	1	3
8	910015302	CRN 457 securing kit on e-Jet2 cart	1	1	3
		Not shown			
	E4PCAL459	"US" Main power cable	1	1	3
	842635	5-metre ground cable, thimble dia.: 6	1	1	3
	F6RLHG362	Conical adapter G 1/4-NPT 1/4	1	1	3

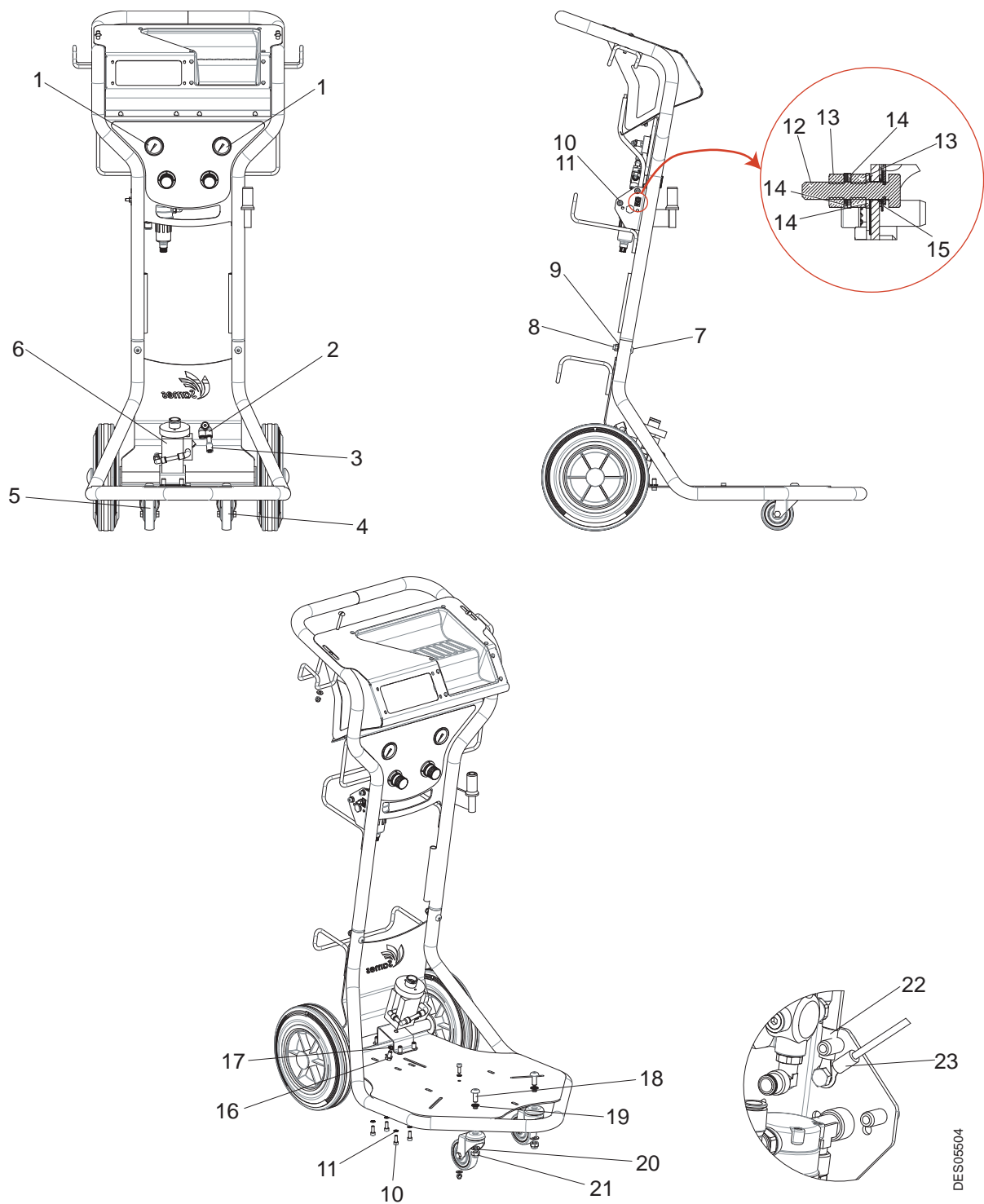
(*)

Level 1: Standard preventive maintenance

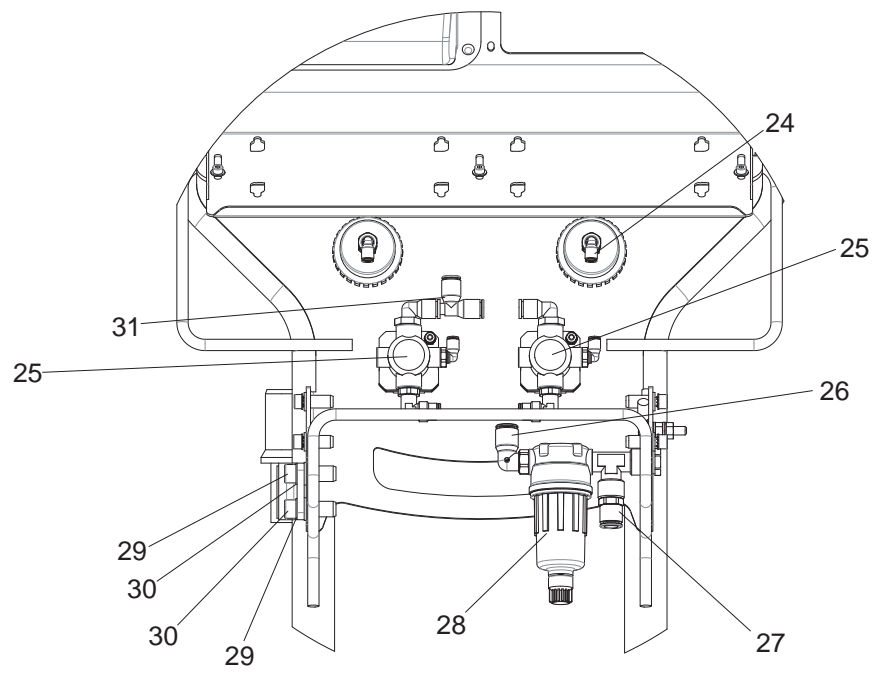
Level 2: Corrective maintenance

Level 3: Exceptional maintenance

9.1.1. Cart, vibrating table version



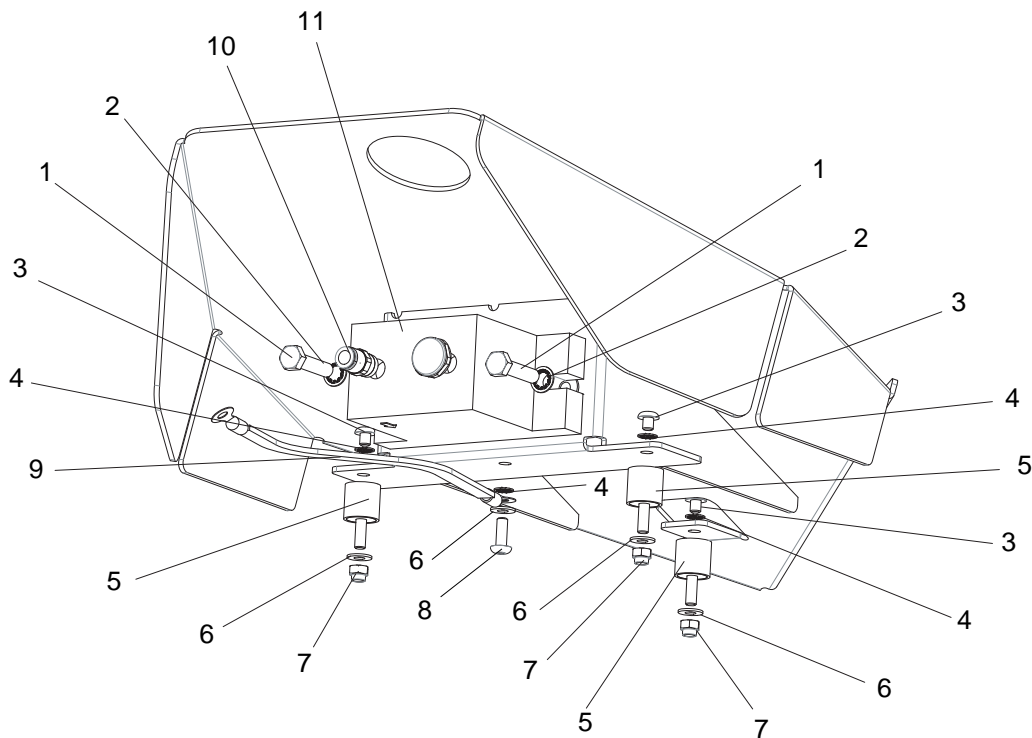
DES05504



Item	Part Number	Description	Qty	Sale unit	Maintenance level for Spare part (*)
	-	Vibrating table (see § 9.1.1.1 page 31)	1	-	-
1	EU9001879	Pressure gauge 4 bar	2	1	3
2	130001161	Dual banjo fitting	1	1	3
3	F6RPRR150	Quick release reducer	1	1	3
Fast clean and securing					
6	1527409	Fast clean (see § 9.1.1.2 page 32)	1	1	3
10	X3AVSY223	Zinc coated Chc M6 x 16 screw	4	1	3
11	EU9000835	Fan washer Dia.: 6	4	1	3
16	X2BVHA280	Zinc coated H M8 x 16 screw	1	1	3
17	EU9000847	Fan washer Dia.: 8	1	1	3
Rollers and securing					
4	EU9000065	Pivoting roller	1	1	3
5	EU9000064	Conductive pivoting roller	1	1	3
18	EU9000760	Black Chc M10 x 30 screw	2	1	3
19	EU9000837	Fan washer Dia.:10	2	1	3
20	X2BDZU010	Zinc coated Z10 U washer	2	1	3
21	X2BEHS010	Zinc coated M 10 U nylstop nut	2	1	3
Securing of arm support on cart					
29	EU9000847	Fan washer Dia.: 8	2	1	3
30	X3AVSY283	Zinc coated Chc M8 x20 screw	2	1	3
Securing high and low parts					
7	250000166	Zinc coated Chc M8 x 40 screw	2	1	3
8	X2BEHS008	Zinc coated M 8 U nylstop nut	2	1	3
9	X2BDZU008	Zinc coated Z 8 U washer	2	1	3
Securing back cover					
10	X3AVSY223	Zinc coated Chc M6 x16 screw	4	1	3
11	EU9000835	Fan washer Dia:6	4	1	3
Ground screw on cart					
12	X7CVHA228	Brass H M6 x 30 screw	1	1	3
13	X7CEHU006	Brass H M6 U nut	2	1	3
14	X7DDZU006	Brass Z6 U washer	3	1	3
15	EU9000835	Fan washer Dia:6	1	1	3
22	910014956	Ground strip	1	1	3
23	910014955	Ground wire CRN e-Jet2	1	1	3
24	F6RLCS016	Female elbow fitting	2	1	3
25	910014735	Regulator assembly (see § 9.1.1.3 page 32)	2	1	2
26	F6RLCS008	Male elbow fitting	1	1	3
27	F6RLUS225	Male union	1	1	3
28	160000152	Filtering cartridge - 5 µm	1	1	1
31	F6RLTS416	Tee fitting	1	1	3
	F6RLDS145	Quick release elbow fitting (back of CRN)	1	1	3

(*) **Level 1: Standard preventive maintenance**
Level 2: Corrective maintenance
Level 3: Exceptional maintenance

9.1.1.1. Vibrating table



DES05482

Item	Part Number	Description	Qty	Sale unit	Maintenance level for Spare part (*)
	-	Vibrating table	1	-	-
1	X2BVHA286	White zinc coated H M 8x 35 8/8 screw	2	1	1
2	EU9000847	Zinc coated M 8 U washer	2	1	1
3	EU9000660	Chc M 6 x 10 rounded screw (securing screw of damper on table)	3	1	3
4	EU9000835	Fan washer Dia.:6	4	1	3
5	EU9000355	Damper	3	1	3
6	X2BDMU006	Zinc coated M 6 U washer	4	1	1
7	X2BEHS006	M6 Nylstop nut	4	1	1
8	EU9000663	Chc M 6 x 20 rounded screw	1	1	3
9	910014952	Ground strip	1	1	3
10	F6RLUS199	Male simple union	1	1	3
11	EU9001031	Pneumatic vibrator	1	1	2

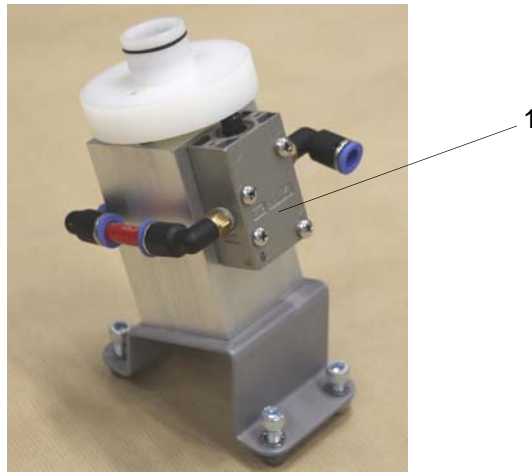
(*)

Level 1: Standard preventive maintenance

Level 2: Corrective maintenance

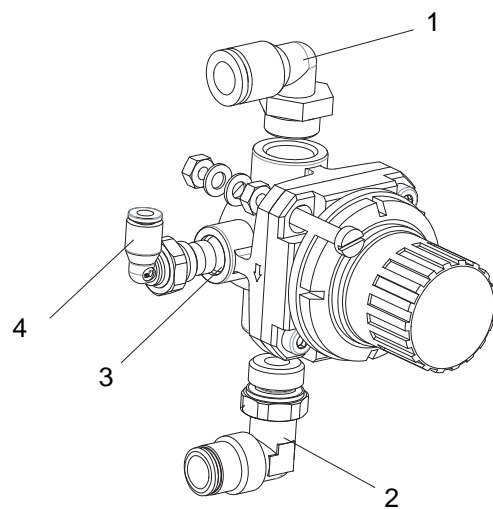
Level 3: Exceptional maintenance

9.1.1.2. Fast Clean



Item	Part Number	Description	Qty	Sale unit	Maintenance level for Spare part (*)
	1527409	Fast Clean	1	1	3
1	F1VPDC132	Distributor	1	1	2

9.1.1.3. Regulator assembly

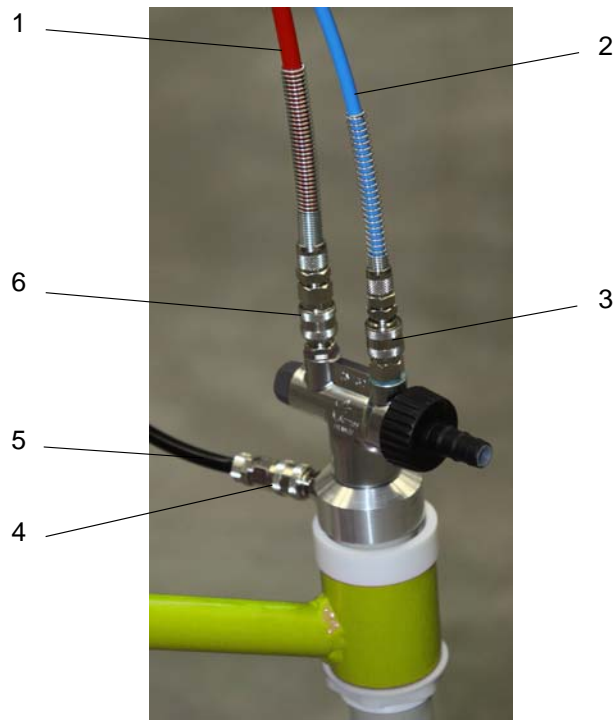


DES05497

Item	Part Number	Description	Qty	Sale unit	Maintenance level for Spare part (*)
	910014735	Regulator assembly	2	1	2
1	F6RLCS411	Male elbow fitting	1	1	3
2	130001160	Swivel fitting	1	1	3
3	EU5000050	Porous ring	1	1	2
4	EU9000062	Male elbow fitting	1	1	3

(*)
Level 1: Standard preventive maintenance
Level 2: Corrective maintenance
Level 3: Exceptional maintenance

9.1.2. Hose and union assembly



Item	Part Number	Description	Qty	Sale unit	Maintenance level for Spare part (*)
	910014736	Hose and union assembly - vibrating table	1	1	3
1	U1GRBW197	Red polyurethane hose - Dia.: 8 mm	1.25	m	1
2	U1GLBT152	Blue polyurethane hose - Dia.: 6 mm	1.3	m	2
3	130001142	Male quick union with spring	1	1	3
4	F6RAJR026	Coupling union	1	1	3
5	130000624	Black polyurethane anti static hose	1.3	m	3
6	130001143	Female quick union with spring	1	1	3

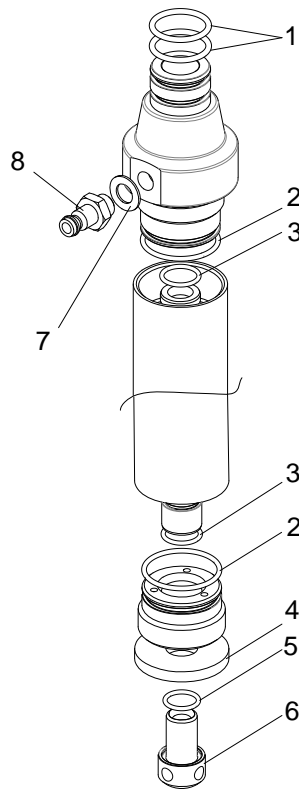
(*)

Level 1: Standard preventive maintenance

Level 2: Corrective maintenance

Level 3: Exceptional maintenance

9.1.3. Fluidization tube



DES05496

Item	Part Number	Description	Qty	Sale unit	Maintenance level for Spare part (*)
	910013651	Fluidization tube	1	1	3
1	J2CTPB253	O-ring black	2	1	1
2	J2FTDF341	O-ring - viton	2	1	1
3	J2FTDF177	O-ring - viton	2	1	1
4	900009302	Porous washer	1	1	1
5	J2FTDF160	O-ring - viton	1	1	1
6	900009303	Suction nozzle	1	1	2
7	EU9000855	Black washer	1	1	3
8	EU9001083	Quick release union	1	1	3

(*)

Level 1: Standard preventive maintenance

Level 2: Corrective maintenance

Level 3: Exceptional maintenance

9.1.4. Arm support



Item	Part Number	Description	Qty	Sale unit	Maintenance level for Spare part (*)
	910013650	Arm support	1	1	3
1	900009297	Plunger tube ring	1	1	2
2	E3RPCN036	Rilsan nut	1	1	2

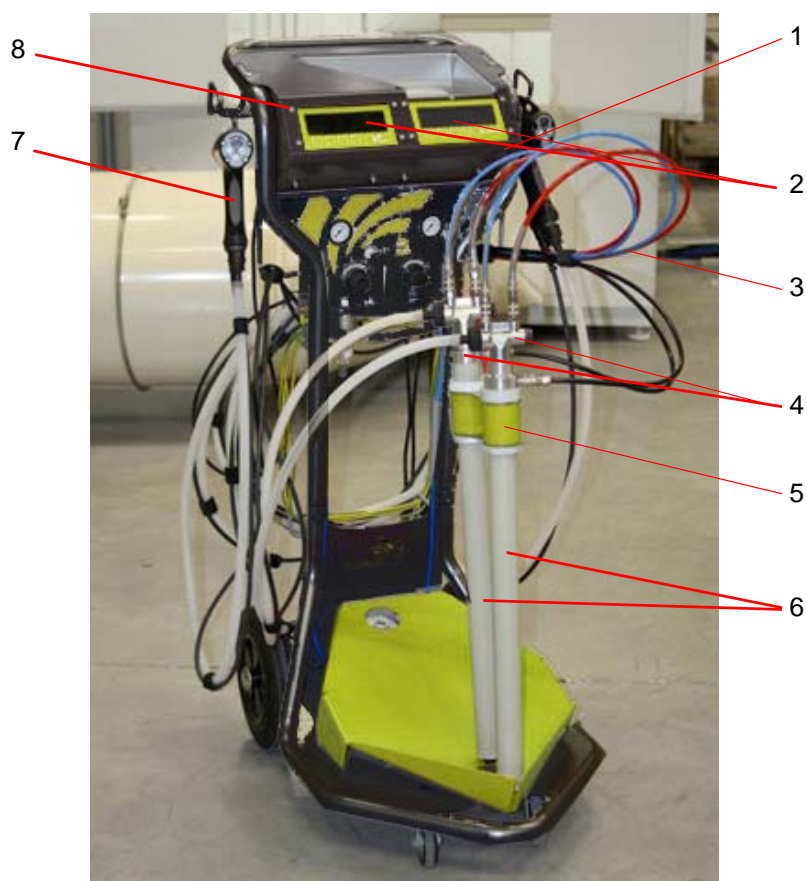
(*)

Level 1: Standard preventive maintenance

Level 2: Corrective maintenance

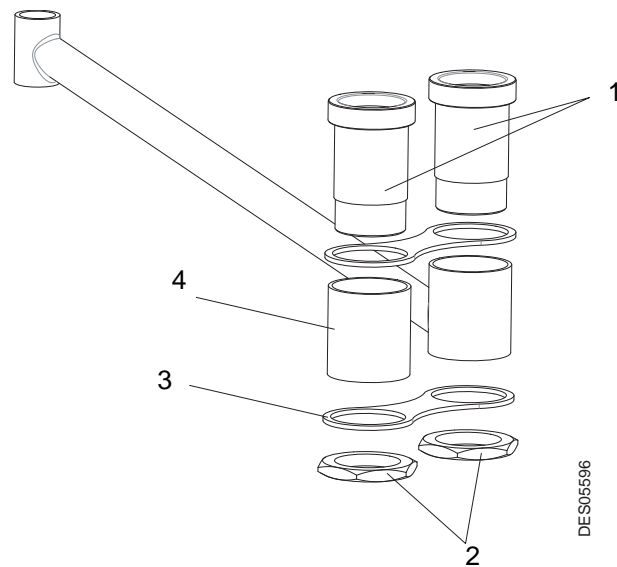
Level 3: Exceptional maintenance

9.2. Dual "e-Jet2" Equipment, vibrating table version



Item	Part Number	Description	Qty	Sale unit	Maintenance level for Spare part (*)
	910015631	Dual "e-Jet2" equiped with vibrating table	1	1	3
1	-	Carriage (see § 9.1.1 page 28)	1	-	-
2	1523297	CRN 457 control module (see RT Nr 6336)	2	1	3
3	910014736	Hose and union assembly (see § 9.1.2 page 33)	2	1	2
4	910013775	Powder pump (see RT Nr 6426)	2	1	3
5	910015633	Arm dual support (see § 9.2.1 page 37)	1	1	3
6	910013651	Fluidization Tube (see § 9.1.3 page 34)	2	1	3
7	1524463	Mach-Jet Gun spray gun (see RT Nr 6336)	1	1	3
	1524463-12	Mach-Jet Gun spray gun (see RT Nr 6336)	1	1	3
8	910015302	CRN 457 securing kit on cart	2	1	3
		Not shown			
	E4PCAL206	Main power cable 10A 250V	2	1	3
	842635	5-metre ground cable, thimble dia.: 6	1	1	3

9.2.1. Dual arm support



Item	Part Number	Description	Qty	Sale unit	Maintenance level for Spare part (*)
	910015633	Dual arm support	1	1	3
1	900009297	Plunger tube ring	2	1	2
2	E3RPCN036	Rilsan nut	2	1	2
3	900009296	Dual plate	2	1	3
4	900010423	Red spacer Dia: 50 mm	1	1	3

(*)

Level 1: Standard preventive maintenance

Level 2: Corrective maintenance

Level 3: Exceptional maintenance

9.3. "e-Jet2" equipment, tank version



Europe version

Item	Part Number	Description	Qty	Sale unit	Maintenance level for Spare part (*)
	910014685	e-Jet2 equipped with tank 6m	1	1	3
	910014686	e-Jet2 equipped with tank 12m	1	1	3
1	-	Cart (see § 9.3.1 page 41)	1	-	-
2	1523297	CRN 457 control module (see RT Nr 6336)	1	1	3
3	910014737	Hose and union assembly (see § 9.3.2 page 43)	1	1	2
4	910013775	Powder pump (see RT Nr 6426)	1	1	3
5	910014738	Tank (see § 9.3.3 page 44)	1	1	3
6	910014333	Air pump (smoke aspiration) (see RT Nr 6426)	1	1	3
7	1524463	“Mach-Jet Gun” spray gun (see RT Nr 6336)	1	1	3
	1524463-12	“Mach-Jet Gun” spray gun (see RT Nr 6336)	1	1	3
8	910015302	CRN 457 securing kit on cart	1	1	3
		Not shown			
	E4PCAL206	Main power cable 10A 250V	1	1	3
	842635	5-metre ground cable, thimble dia.: 6	1	1	3

(*)

Level 1: Standard preventive maintenance

Level 2: Corrective maintenance

Level 3: Exceptional maintenance

”US” Version

Item	Part Number	Description	Qty	Sale unit	Maintenance level for Spare part (*)
	910014689	e-Jet2 equipped with tank 6m	1	1	3
	910014690	e-Jet2 equipped with tank 12m	1	1	3
1	-	Cart (see § 9.3.1 page 41)	1	-	-
2	1523297	CRN 457 control module (see RT Nr 6336)	1	1	3
3	910014737	Hose and union assembly (see § 9.3.2 page 43)	1	1	2
4	910013775	Powder pump (see RT Nr 6426)	1	1	3
5	910014738	Tank (see § 9.3.3 page 44)	1	1	3
6	910014333	Air pump (smoke aspiration) (see RT Nr 6426)	1	1	3
7	1524463	“Mach-Jet Gun” spray gun (see RT Nr 6336)	1	1	3
	1524463-12	“Mach-Jet Gun” spray gun (see RT Nr 6336)	1	1	3
8	910015302	CRN 457 securing kit on cart	1	1	3
		Not shown			
	E4PCAL459	US Main power cable	1	1	3
	842635	5-metre ground cable, thimble dia.: 6	1	1	3
	F6RLHG362	Conical adapter	1	1	3

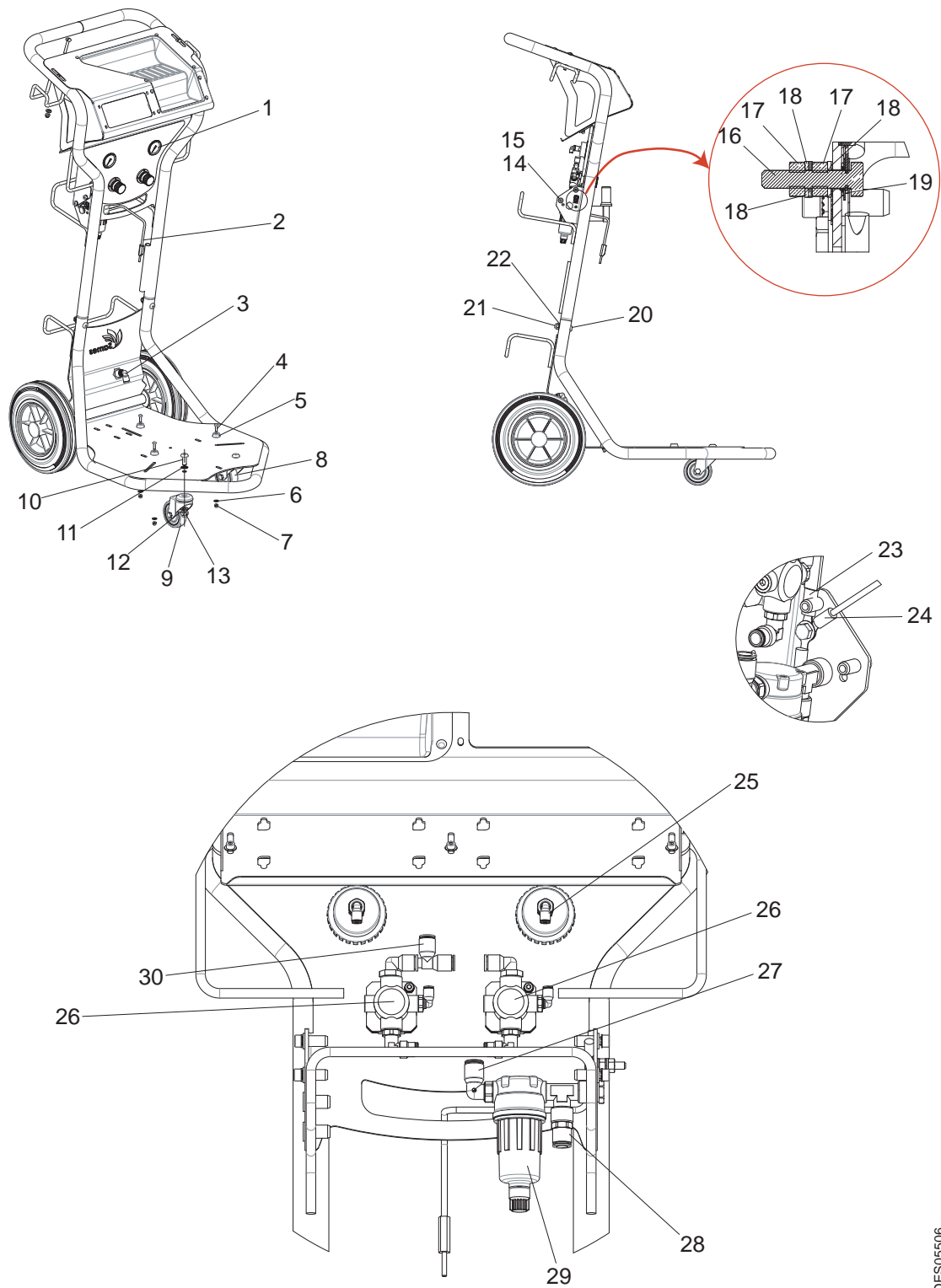
(*)

Level 1: Standard preventive maintenance

Level 2: Corrective maintenance

Level 3: Exceptional maintenance

9.3.1. Cart, tank version



DES05506

Item	Part Number	Description	Qty	Sale unit	Maintenance level for Spare part (*)
1	EU9001879	Pressure gauge 4 bars	2	1	3
2	910015323	Ground strip	1	1	3
3	F6RLCS204	Elbow union	1	1	3
4	EU9000563	HC M5 x 20 screw	3	1	3
5	EU9001915	Positioning stud	3	1	2
6	X4KDMU005	Stainless steel M5 U washer	3	1	3
7	X2BEHS005	M5 nylstop nut	3	1	3
		Rollers and securing			
8	EU9000064	Conductive pivoting roller	1	1	3
9	EU9000065	Pivoting roller	1	1	3
10	EU9000760	Black Chc M10 x 30 screw	2	1	3
11	EU9000837	Fan washer Dia.:10	2	1	3
12	X2BDZU010	Zinc coated Z10 U washer	2	1	3
13	X2BEHS010	Zinc coated M 10 U nylstop nut	2	1	3
		Securing back cover			
14	X3AVSY223	Zinc coated Chc M6 x16 screw	4	1	3
15	EU9000835	Fan washer Dia:6	4	1	3
		Ground screw on cart			
16	X7CVHA228	Brass H M6 x 30 screw	1	1	3
17	X7CEHU006	Brass H M6 U nut	2	1	3
18	X7DDZU006	Brass Z6 U washer	3	1	3
19	EU9000835	Fan washer Dia:6	1	1	3
		Securing high and low parts			
20	250000166	Zinc coated Chc M8 x 40 screw	2	1	3
21	X2BEHS008	Zinc coated M 8 U nylstop nut	2	1	3
22	X2BDZU008	Zinc coated Z 8 U washer	2	1	3
23	910014956	Ground strip	1	1	3
24	910014955	Ground wire CRN e-Jet2	1	1	3
25	F6RLCS016	Female elbow fitting	2	1	3
26	910014735	Regulator assembly (see § 9.1.1.3 page 32)	2	1	2
27	F6RLCS008	Male elbow fitting	1	1	3
28	F6RLUS225	Male union	1	1	3
29	160000152	Filtering cartridge - 5 µm	1	1	1
30	F6RLTS416	Tee fitting	1	1	3
-	F6RLDS145	Quick release elbow fitting (back of CRN)	1	1	3
-	F6RAJR026	Coupling union 8 mm	1	1	3

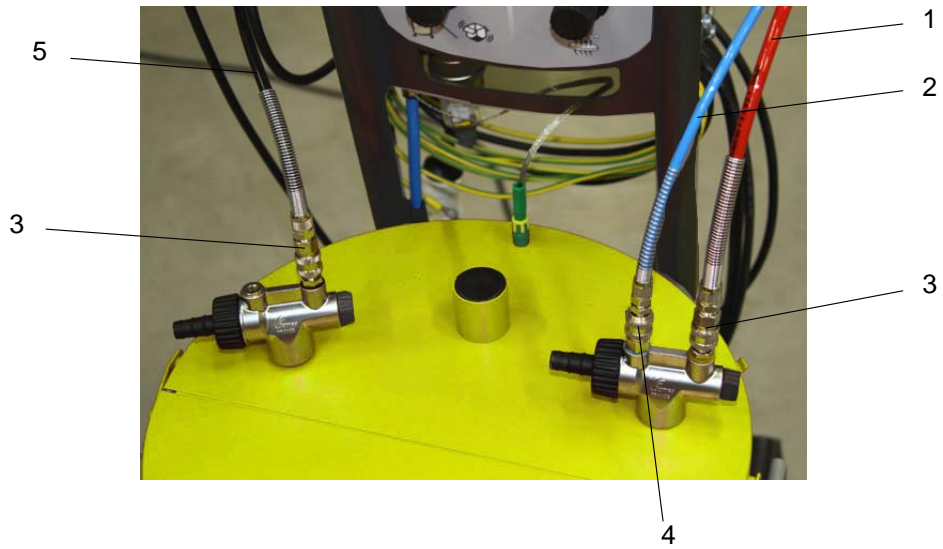
(*)

Level 1: Standard preventive maintenance

Level 2: Corrective maintenance

Level 3: Exceptional maintenance

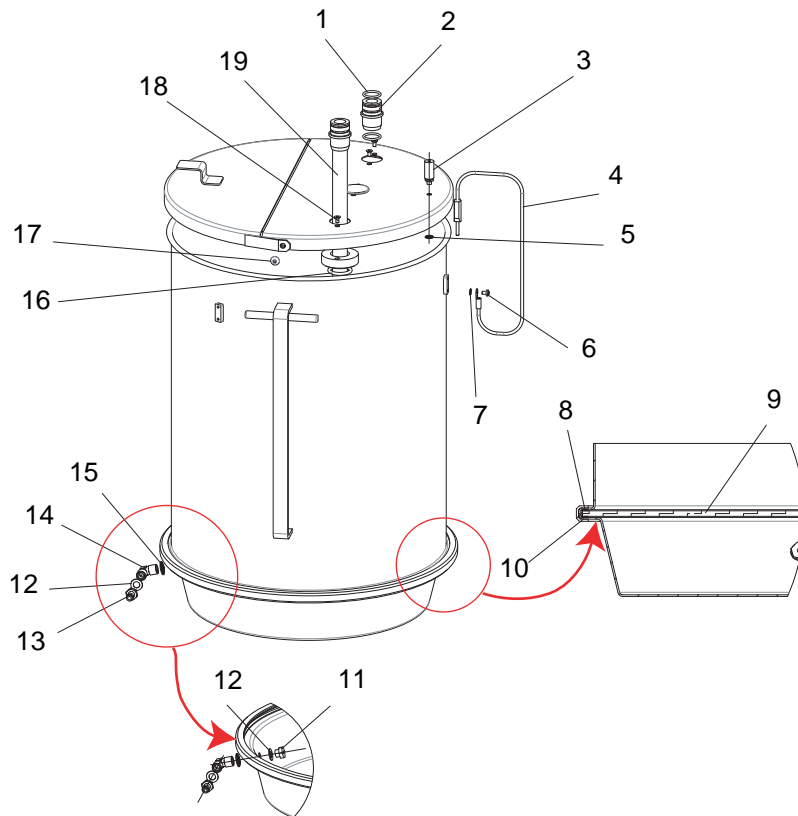
9.3.2. Hose and union assembly
Dual version not shown.



Item	Part Number	Description	Qty	Sale unit	Maintenance level for Spare part (*)
	910014737	Single Hose and union assembly - tank	1	1	3
1	U1GRBW197	Red polyurethane hose - Dia.: 8 mm	0.7	m	1
2	U1GLBT152	Blue polyurethane hose - Dia.: 6 mm	0.7	m	2
3	130001143	Female quick union with spring	2	1	3
4	130001142	Male quick union with spring	1	1	3
5	130000624	Black polyurethane anti static hose	0.85	m	3

(*)
Level 1: Standard preventive maintenance
Level 2: Corrective maintenance
Level 3: Exceptional maintenance

9.3.3. Single Tank
Dual version not shown.



DES05579

Item	Part Number	Description	Qty	Sale unit	Maintenance level for Spare part (*)
	910014738	Single tank	1	1	3
1	J2CTPB253	O-ring - black	2	1	3
2	547866	Support tube	1	1	3
3	EU9000113	Ground thimble	1	1	3
4	910015417	Ground strip	1	1	3
5	EU9000885	Fan washer D: 6	1	1	3
6	EU9000552	M4 x6 screw	1	1	3
7	X2BDVX004	Fan washer AZ 4	1	1	3
8	EU75000033	Fluidizing seal	1	1	1
9	EU75000006	Porous plate	1	1	1
10	EU5008023	Band clamp	1	1	2
11	130000818	Male female reduction	1	1	3
12	EU9000855	Black washer 1/8	2	1	3
13	EU9001083	Quick union 1/8	1	1	3
14	EU9000189	Elbow union 1/8 BSP	1	1	3
15	EU9000837	Fan washer D: 10	1	1	3
16	J2CTCN052	O-ring - black	2	1	3
17	EU9000668	M 6 x 8 screw	2	1	3
18	X4EVSF117	Stainless steel F/90 HC M4 x 8 screw	1	1	2
19	910008159	450 mm Tube for pump	1	1	3

9.4. Dual "e-Jet2" equipment, tank version



Item	Part Number	Description	Qty	Sale unit	Maintenance level for Spare part (*)
	910015632	Dual "e-Jet2" equipment, tank version	1	1	3
1	-	Cart (see § 9.3.1 page 41)	1	-	-
2	1523297	CRN 457 control module (see RT Nr 6336)	2	1	3
3	-	Hose and union assembly (SP see § 9.3.2 page 43)	1	-	2
4	910013775	Powder pump (see RT Nr 6426)	2	1	3
5	910015634	Dual tank (SP see § 9.3.1 page 41)	1	1	3
6	910014333	Air pump (smoke aspiration) (see RT Nr 6426)	1	1	3
7	1524463	"Mach-Jet Gun" spray gun (see RT Nr 6336)	1	1	3
	1524463-12	"Mach-Jet Gun" spray gun (see RT Nr 6336)	1	1	3
8	910015302	CRN 457 securing kit on cart	2	1	3
		Not shown			
	E4PCAL206	Main power cable 10A 250V	2	1	3
	842635	5-metre ground cable, thimble dia.: 6	1	1	3