



DOCUMENTATION - DOKUMENTATION - DOCUMENTACIÓN

PISTOLET / GUN / PISTOLE / PISTOLA

A 25

**PNEUMATIQUE / PNEUMATIC
PNEUMATISCHE / NEUMÁTICA**

Notice / Manual / Betriebsanleitung / Libro : 582.055.110 - 1605

Date / Datum / Fecha : 27/05/16

Annule / Supersede / Ersetzt / Anula :

Modif. / Änderung :

**NOTICE ORIGINALE / TRANSLATION FROM THE ORIGINAL MANUAL
/ ÜBERSETZUNG DER ORIGINAL BETRIEBSANLEITUNG
/ TRADUCCIÓN DEL MANUAL ORIGINAL**

IMPORTANT : Lire attentivement tous les documents avant le stockage, l'installation ou la mise en service du matériel concerné (à usage strictement professionnel).

Before assembly and start-up, please read and clearly understand all the documents relating to this equipment (professional use only).

WICHTIGER HINWEIS: Vor Lagerung, Installation oder Inbetriebnahme des Geräts bitte sämtliche Dokumente sorgfältig lesen (Einsatz nur von geschultem Personal).

IMPORTANTE : Lea con atención todos los documentos antes de almacenar, instalar o poner en marcha el equipo (uso exclusivamente profesional).

PHOTOS ET ILLUSTRATIONS NON CONTRACTUELLES. MATÉRIELS SUJETS A MODIFICATION(S) SANS PREAVIS.

THE PICTURES AND DRAWINGS ARE NON CONTRACTUAL. WE RESERVE THE RIGHT TO MAKE CHANGES WITHOUT PRIOR NOTICE.

ALLE IN DIESEM DOKUMENT ENTHALTENEN SCHRIFTLICHEN ANGABEN UND ABBILDUNGEN STELLEN DIE NEUESTEN

PRODUKTINFORMATIONEN DAR. WIR BEHALTEN UNS DAS RECHT VOR, JEDERZEIT OHNE VORANKÜNDIGUNG ÄNDERUNGEN VORZUNEHMEN.

LAS FOTOGRAFÍAS E ILUSTRACIONES NO SON VINCULANTES. LOS MATERIALES ESTÁN SUJETOS A CAMBIOS SIN PREVIO AVISO.

KREMLIN - REXSON

150, avenue de Stalingrad

93 245 - STAINS CEDEX - France

☎ : 33 (0)1 49 40 25 25 Fax : 33 (0)1 48 26 07 16

www.kremlin-rexson.com



<p align="center">FR</p> <p>Pour une utilisation sûre, il est de votre responsabilité de :</p> <ul style="list-style-type: none"> • Lire attentivement tous les documents contenus dans le CD joint avant la mise en service de l'équipement, • D'installer, d'utiliser, d'entretenir et de réparer l'équipement conformément aux préconisations de KREMLIN REXSON ainsi qu'aux réglementations nationales et/ou locales, • Vous assurez que les utilisateurs de cet équipement ont été formés, ont parfaitement compris les règles de sécurité et qu'ils les appliquent. 	<p align="center">UK</p> <p>To ensure safe use of the machinery, it is your responsibility to:</p> <ul style="list-style-type: none"> • Carefully read all documents contained on the enclosed CD before putting the machinery into service, • Install, use, maintain and repair the machinery in accordance with KREMLIN REXSON's recommendations and national and/or local regulations, • Make sure that the users of the machinery have received proper training and that they have perfectly understood the safety rules and apply them. 	<p align="center">DE</p> <p>Eine sichere Nutzung setzt voraus, dass Sie: :</p> <ul style="list-style-type: none"> • alle in der CD enthaltenen Dokumente vor der Inbetriebnahme der Anlage aufmerksam lesen, • die Anlage im Einklang mit den Empfehlungen von KREMLIN REXSON sowie mit den nationalen und/oder lokalen Bestimmungen installieren, verwenden, warten und reparieren, • sich vergewissern, dass die Nutzer dieser Anlage angemessen geschult wurden, die Sicherheitsbestimmungen verstanden haben und sie anwenden.
<p align="center">ES</p> <p>Para una utilización segura, será de su responsabilidad:</p> <ul style="list-style-type: none"> • leer atentamente todos los documentos que se incluyen en el CD adjunto antes de la puesta en servicio del equipo, • instalar, utilizar, efectuar el mantenimiento y reparar el equipo con arreglo a las recomendaciones de KREMLIN REXSON y a la normativa nacional y/o local, • cerciorarse de que los usuarios de este equipo han recibido la formación necesaria, han entendido perfectamente las normas de seguridad y las aplican. 	<p align="center">IT</p> <p>Per un uso sicuro, vi invitiamo a:</p> <ul style="list-style-type: none"> • leggere attentamente tutta la documentazione contenuta nel CD allegato prima della messa in funzione dell'apparecchio, • installare, utilizzare, mantenere e riparare l'apparecchio rispettando le raccomandazioni di KREMLIN REXSON, nonché le normative nazionali e/o locali, • accertarvi che gli utilizzatori dell'apparecchio abbiano ricevuto adeguata formazione, abbiano perfettamente compreso le regole di sicurezza e le applichino. 	<p align="center">PT</p> <p>Para uma utilização segura, é da sua responsabilidade:</p> <ul style="list-style-type: none"> • Ler atentamente todos os documentos incluídos no CD em anexo antes de pôr o equipamento em funcionamento, • Proceder à instalação, utilização, manutenção e reparação do equipamento de acordo com as preconizações de KREMLIN REXSON, bem como com outros regulamentos nacionais e/ou locais aplicáveis, • Assegurar-se que os utilizadores do equipamento foram devidamente capacitados, compreenderam perfeitamente e aplicam as devidas regras de segurança.
<p align="center">NL</p> <p>Voor een veilig gebruik dient u:</p> <ul style="list-style-type: none"> • alle document op de bijgevoegde cd aandachtig te lezen alvorens het apparaat in werking te stellen, • het apparaat te installeren, gebruiken, onderhouden en repareren volgens de door KREMLIN REXSON gegeven aanbevelingen en overeenkomstig de nationale en/of plaatselijke reglementeringen, • zeker te stellen dat de gebruikers van dit apparaat zijn opgeleid, de veiligheidsregels perfect hebben begrepen en dat zij die ook toepassen. 	<p align="center">SE</p> <p>För en säker användning av utrustningen ansvarar ni för följande:</p> <ul style="list-style-type: none"> • Läs noga samtliga dokument som finns på den medföljande cd-skivan innan utrustningen tas i drift. • Installera, använd, underhåll och reparera utrustningen enligt anvisningarna från KREMLIN REXSON och enligt nationella och/eller lokala bestämmelser. • Försäkra er om att användare av denna utrustning erhållit utbildning, till fullo förstått säkerhetsföreskrifterna och tillämpar dem. 	<p align="center">FI</p> <p>Käytön turvallisuuden varmistamiseksi velvollisuutesi on:</p> <ul style="list-style-type: none"> • Lukea huolella kaikki CD:llä olevat asiakirjat ennen laitteiston käyttöönottoa, • Noudattaa laitteiston asennuksessa, käytössä, kunnossapidossa ja huollossa KREMLIN REXSON in suosituksia sekä kansallisia ja/tai paikallisia määräyksiä, • Varmistaa, että laitteiston käyttäjät ovat koulutettuja ja ymmärtävät täysin turvallisuusmääräykset ja miten niitä sovelletaan.
<p align="center">PL</p> <p>Dla zapewnienia bezpiecznego użytkowania na użytkownika spoczywa obowiązek:</p> <ul style="list-style-type: none"> • Uważnego zapoznania się ze wszystkimi dokumentami znajdującymi się na załączonej płycie CD przed pierwszym uruchomieniem urządzenia, • Instalowania, użytkowania, konserwacji i naprawy urządzenia zgodnie z zaleceniami firmy KREMLIN REXSON oraz z przepisami miejscowymi, • Upewnienia, że wszyscy przeszkoleni użytkownicy urządzenia zrozumieli zasady bezpieczeństwa i stosują się do nich. 	<p align="center">CS</p> <p>Pro bezpečné používání jste povinni:</p> <ul style="list-style-type: none"> • Před uvedením zařízení do provozu si pozorně přečíst veškeré dokumenty obsažené na příloženém CD, • Nainstalovat, používat, udržovat a opravovat zařízení v souladu s pokyny firmy KREMLIN REXSON a s národními a/nebo místními legislativními předpisy, • Ujistit se, že uživatelé tohoto zařízení byli vyškoleni, že dokonale pochopili bezpečnostní pravidla a že je dodržují. 	<p align="center">RU</p> <p>Для целей безопасного использования необходимо:</p> <ul style="list-style-type: none"> • Ознакомиться со всеми документами, содержащимися в прилагаемом компакт-диске до ввода оборудования в эксплуатацию; • Устанавливать, использовать, производить техническое обслуживание и ремонт оборудования в соответствии с рекомендациями KREMLIN REXSON и национальным и/или местным законодательством; • Убедиться, что пользователи настоящего оборудования прошли подготовку, надлежащим образом усвоили правила безопасности и обеспечивают их соблюдение.

Déclaration(s) de conformité au verso de ce document / Declaration(s) of conformity at the back of this document / Konformitätserklärung(en) auf der Rückseite dieser Unterlage / Declaración (es) de conformidad en el reverso de este documento / Dichiarazione/i di conformità sul retro del presente documento / Declaração(ões) de conformidade no verso do documento / Conformiteitsverklaring(en) op de keerzijde van dit document / Försäkran om överensstämmelse på omstående sida av detta dokument / Vaatimustenmukaisuusvakuutukset tämän asiakirjan kääntöpuolella / Deklaracja(e) zgodności na odwrocie dokumentu / Prohlášení o shodě se nachází/nacházejí na zadní straně tohoto dokumentu / Сертификат(ы) соответствия расположены на оборотной стороне настоящего документа



DECLARATION UE DE CONFORMITE
UE DECLARATION OF CONFORMITY
EU- KONFORMITÄTSEKTLÄRUNG
DECLARACIÓN UE DE CONFORMIDAD
DICHIARAZIONE DI CONFORMITÀ UE
DECLARAÇÃO UE DE CONFORMIDADE
EU-CONFORMITEITSVERKLARING
EU-FÖRSÄKRAN OM ÖVERENSSTÄMMELSE
EU- VAATIMUKSEN MUKAISUUSVAKUUTUS
DEKLARACJA ZGODNOŚCI UE
EU PROHLÁŠENÍ O SHODĚ
ДЕКЛАРАЦИЯ О СООТВЕТСТВИИ НОРМАМ ЕС


Le fabricant / The manufacturer / Der Hersteller / El fabricante / Il produttore / O fabricante / De fabrikant / Tillverkare / Valmistaja / Producent / Výrobce / Изготовитель:	KREMLIN REXSON 150, avenue de Stalingrad 93 240 - STAINS - FRANCE Tél. 33 (0)1 49 40 25 25 - Fax : 33 (0)1 48 26 07 16
--	--

Déclare que le matériel désigné ci-après / Herewith declares that the equipment / erklärt hiermit, dass die / Declara que el material designado a continuación / Dichiaro che il materiale sottindicato / Declara que o material a seguir designado / verklaart dat de hieronder aangeduide apparatuur / Kungör att den utrustning som anges här nedan / ilmoittaa, että alla mainitut laitteistot / Oświadczca, że wymienione poniżej urządzenia / Prohlašuje, že níže uvedené vybavení / Декларирует, что ниженазванное оборудование:

PISTOLETS AUTOMATIQUES DE PULVERISATION PNEUMATIQUES / AIRSPRAY AUTOMATIC SPRAYING GUNS / AUTOMATIK LUFTSPRITZPISTOLEN / PISTOLAS AUTOMÁTICAS DE PULVERIZACIÓN NEUMÁTICAS

A 25
A 25 F
A 26
A 28
A 29
A 35
A 3

Est conforme à la législation d'harmonisation de l'Union applicable suivante / Is in conformity with the relevant Union harmonisation legislation / Erfüllt die einschlägigen Harmonisierungsrechtsvorschriften der Union / es conforme con la legislación de armonización pertinente de la Unión / è conforme alla pertinente normativa di armonizzazione dell'Unione / in overeenstemming met de desbetreffende harmonisatiewetgeving van de Unie / med den relevanta harmoniserade unionslagstiftningen / on asiaa koskevan unionin yhdenmukaistamislainsäädännön vaatimusten mukainen / jest zgodny z odpowiednimi wymaganiami unijnego prawodawstwa harmonizacyjnego / Shoduje se s následující příslušnou evropskou harmonizační legislativou / Соответствует следующим стандартизированным нормам Союза

Directive ATEX / ATEX Directive / ATEX Richtlinie / Directiva ATEX / Direttiva ATEX / Diretiva ATEX / ATEX-Richtlijn / ATEX-direktivet / ATEX-direktivi / Dyrektywa ATEX / Směrnice ATEX / Директива ATEX	2014/34/UE
 II 2G IIA T6	
Procédure d'évaluation de la conformité : Module A Documentation technique (Annexe VIII) archivée par : / Conformity assessment procedure: Module A Technical documentation (ANNEX VIII) recorded by: / Verfahren zur Konformitätsbewertung: Modul A Technische Unterlagen (ANLAGE VIII) archiviert durch: / Procedimiento de evaluación de la conformidad: Módulo A Documentación técnica (ALLEGATO VIII) archivada por: / Procedura di valutazione della conformità: Modulo A Documentazione tecnica (ALLEGATO VIII) archiviata a cura di: / Procedimento de avaliação da conformidade: Módulo A Documentação técnica (ANEXO VIII) arquivada por: / Conformiteitsbeoordelingsprocedure: Module A Technische documentatie (BIJLAGE VIII) gearhiveerd door: / Förfarande för bedömning av överensstämmelse: Modul A Teknisk dokumentation (BILAGA VIII) arkiverad av: / Vaatimustenmukaisuusarviointimenetelmä: moduuli A Tekninen dokumentaatio (LIITE VIII) arkistoitu: / Procedura oceny zgodności: Modul A Dokumentacja technicznej (ZAŁĄCZNIK VIII) zarchiwizowane przez: / Postup posuzování shody: Modul A Technická dokumentace (PŘÍLOHA VIII) archivována: / Процедура оценки соответствия: Модуль A Техническая документация (ПРИЛОЖЕНИЕ VIII), архивированная:	
ISSeP Zoning A. Schweitzer Rue de la Platinerie B - 7340 COLFONTAINE BELGIQUE	

Dominique LAGOUGE

Directeur Général / Chief Executive Officer / Generaldirektor / Director General / Direttore Generale / Director Geral / Algemeen Directeur / Generaldirektör / Pääjohtaja / Dyrektor Naczelny / Dyrektor Generalny / Generální ředitel / Генеральный директор

Fait à Stains, le / Established in Stains, on / Geschehen zu Stains, am / En Stains, a / Redatto a Stains, / Vastgesteld te Stains, / Utformat i Stains, den / Stains, Ranska, / Sporządzono w Stains, dnia / Stains, dnia / Издано в г. Стен (Stains) 10/06/2016 - 06/10/2016



INSTALLATION AND SAFETY INSTRUCTIONS

TRANSLATION OF THE ORIGINAL MANUAL

IMPORTANT : Before assembly and start-up, please read and clearly understand all the documents relating to this equipment (professional use only).

THE PICTURES AND DRAWINGS ARE NON CONTRACTUAL. WE RESERVE THE RIGHT TO MAKE CHANGES WITHOUT PRIOR NOTICE.

KREMLIN - REXSON

150, avenue de Stalingrad

93 245 - STAINS CEDEX – France

☎ : 33 (0)1 49 40 25 25 *Fax* : 33 (0)1 48 26 07 16

www.kremlin-rexson.com

1. SAFETY INSTRUCTIONS

GENERAL SAFETY INSTRUCTIONS



CAUTION : The equipment can be dangerous if you do not follow our instructions concerning installation and servicing described in this manual and in accordance with applicable European standards and local national safety regulations.

Please carefully read all the instruction literature before operating your equipment.

Only trained operators can use the equipment (To acquire an essential training, please contact the "KREMLIN REXSON University" training center - Stains).

The foreman must ensure that the operator has understood the safety instructions for this equipment as well as the instructions in the manuals for the different parts and accessories.

Read carefully all instruction manuals, label markings before operating the equipment.



















Incorrect use may result in injury. This equipment is for professional use only. It must be used only for what it has been designed for. Never modify the equipment. The parts and accessories supplied must be regularly inspected. Defective or worn parts must be replaced.

Guards (motor cover, coupling shields, connectors,...) have been designed for a safe use of the equipment.
The manufacturer will not be held responsible for bodily injury or failure and / or property damage due to destruction, the overshadowing or the partial or total removal of the guards.

Never exceed the equipment components' maximum working pressure.

Comply with regulations concerning safety, fire risks, electrical regulations in force in the country of final destination of the material. Use only products or solvent compatible with the parts in contact with the material (refer to data sheet of the material manufacturer).

PICTOGRAMS

					
NIP HAZARD	WARNING MOVING ELEVATOR	WARNING MOVING PARTS	WARNING MOVING SHOVEL	DO NOT EXCEED THIS PRESSURE	HIGH PRESSURE HAZARD
					
RELIEF OR DRAIN VALVE	WARNING HOSE UNDER PRESSURE	WEAR GLASSES OBLIGATORY	WEAR OF GLOVES IS OBLIGATORY	PRODUCT VAPOR HAZARDS	WARNING HOT PARTS OR AREAS
					
ELECTRICAL HAZARD	WARNING FIRE HAZARDS	EXPLOSION HAZARDS	GROUNDING	WARNING (USER)	WARNING SERIOUS INJURIES

FIRE - EXPLOSION - SPARKS - STATIC ELECTRICITY HAZARDS

A poor earth connection, inadequate ventilation, sparks or static electricity can cause an explosion or fire. to avoid these risks when using or servicing KREMLIN REXSON equipment, the following safety procedures must be followed :



- ensure a good earth connection and ground the parts to be handled i.e. solvents, materials, components and equipment,
- ensure adequate ventilation,
- keep working area clean and free from waste solvents, chemicals, or solid waste i.e. rags, paper and empty chemicals drums,
- never use electrical switches / power if in an atmosphere of volatile solvent vapour,
- stop working immediately in case of electrical arcs,
- never store chemicals and solvents in the working area.
- use paint whose flash point is the highest possible to prevent from any formation of gas and inflammable vapours (refer to materials' safety instructions),
- install a cover on the drums to reduce the diffusion of gas and vapours in the spraybooth.

TOXIC PRODUCT HAZARDS

Toxic products or vapours can cause severe injury not only through contact with the body, but also if the products are ingested or inhaled. It is imperative :



- to know the material products and their risks,
- notified or hazardous materials must be stored in accordance with the regulations,
- the material must be stored in an appropriate container, never place materials in a container where there is a risk of spillage or leakage,
- a procedure must be applied for the safe disposal of waste material. It must comply with all prevailing regulations and legislations of the country where the equipment is to be used,
- protective clothing should always be worn in compliance with the material manufacturers' recommendations,
- depending on the application and chemical safety instructions, safety glasses, hearing protective earplug, gloves, foot wear, protective masks and possible breathing equipment should be worn to comply with the regulations (Refer to chapter "Safety equipment of KREMLIN selection guide).

CAUTION!

It is forbidden to use material containing high concentrations of halogenated hydrocarbon solvents with **aluminium or zinc fillers** .Non-compliance with the instructions may cause explosion risk causing serious or fatal injury.

EQUIPMENT REQUIREMENTS

Guards (motor cover, coupling shields, connectors,...) have been designed for a safe use of the equipment.

The manufacturer will not be held responsible for bodily injury or failure and / or property damage due to destruction, the overshadowing or the partial or total removal of the guards.

PUMP



Before carrying out any work, it is imperative to read and clearly understand the disassembly and reassembly instructions before servicing. The operator must understand the equipment and the safety instructions. These instructions are available in the equipment manuals.



The air motor is designed to be mounted with a pump. Never modify any components or couplings. When operating, please keep hands away from moving parts. Before starting up the equipment, please read the PRESSURE RELIEF instructions. Please ensure that any relief or drain valves fitted are in good working order.

HOSES

- Keep hoses out of circulation areas, moving parts or hot surfaces,
- Never expose product hoses to temperature higher than + 60°C / 140° F or lower than 0°C / 32° F,
- Never pull or use the hoses to move the equipment,
- Tighten all fittings as well as the hoses before operating the equipment,
- Check the hoses regularly; change them if they are damaged,
- Never exceed the working pressure (WP) indicated on the hose.

USED PRODUCTS

Considering the wide variety of products that are available and can be used in our equipment it is impossible to check and make recommendations for all chemical data, regarding the risks of possible chemical attack and their long term chemical reaction

KREMLIN REXSON can not be held liable for :

- Compatibility of wetted parts,
- Risks to staff and the surroundings,
- for worn or defective parts, for faulty equipment or units, or the quality of final product.

It is the responsibility of the user to know and prevent any possible risks such as toxic vapours, fires or explosions. He shall determine the risks of immediate reactions or pursuant to repeated exposures of the staff,

KREMLIN REXSON shall not be liable for physical injuries, direct or indirect material damages caused by the use of chemicals.

2. HANDLING



Check the weight and the dimensions of the equipment

(☞ refer to 'Technical features' section of the instruction manual

If weight and dimensions are too important, the unloading must be carried out by means of a forklift or any other appropriate means with a qualified personnel and in a clear horizontal area to prevent from risks of damage injury or an accident.

The centre of gravity is not in the centre of the machine : carry out by hand a stability-test after having lifted the whole at 10 cm / 3.937" maximum.

After the unloading, the handling of the whole (eg: elevator pump) is carried out by means of a pallet truck taking the bottom part of the frame.

Remark : Each pump motor is fitted with a ring. The ring is designed for the hoisting of one pump and can not be used for the handling of the complete machine.

3. STORING

Storing before installation :

- Storing ambient temperature : 0 / +50 °C / 0 / +122°F
- Protect the whole against dust, water trickling, dampness and shocks.

Storing after installation :

- Operating temperature : +15 / +35 °C / +59 / +138.2° F
- Protect the whole against dust, water trickling, dampness and shocks.

4. INSTALLATION OF THE EQUIPMENT

The machine is installed on a stable horizontal floor (for eg a concrete flag).



To avoid risks caused by static electricity, the equipment as well as its components must be grounded.

- **For the pumping equipments** (pumps, pneumatic rams, frame...), a section wire of 2.5 mm² is fixed on the material. Use this wire to connect the material to "the general ground". In case of severe environments (mechanical protection of the wire of earthing insufficient, vibrations, mobile material...) where function damages at the ground are probable, the user have to replace the provided wire of 2.5 mm² by a device more adapted to its environment (wire with a more important section, bonding strip, fixing by thimble with eyelet...),

The continuity of the ground must be controlled by a qualified electrician. If the continuity of the ground is not ensured, check the terminal, the wire and the earthing point. **Never** use the material without have solved this problem.

- In the severe cases of environments (mechanical protection of the wire of earthing insufficient, vibrations, mobile material...) where damages of the function put at the ground are probable, the user will have to replace the wire of 2.5 mm² provided, by a device more adapted to its environment (wire of more important section, bonding strip, fixing by thimble with eyelet...),
- **The gun** must be 'grounded' via a material hose or an air hose. In case of spraying by means of a gun with cup, the air hose must be conductive,
- **The materials to be painted** must also be grounded.

All the materials situated in the working area shall be grounded.

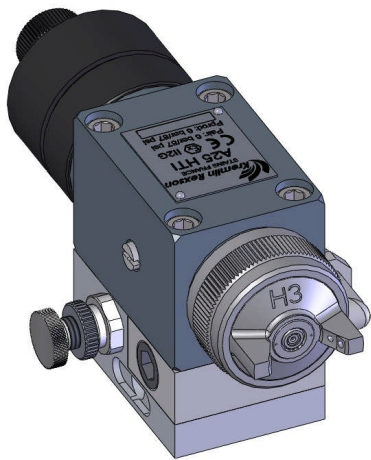


- **Never store** more than necessary inflammable materials inside the working area,
- The materials must be stored into **approved drums** and grounded,
- Use only grounded **metals containers** for the use of cleaning solvents,
- **Cardboard and paper are prohibited.**

5. MARKING OF THE EQUIPMENT

Each equipment has a marking plate.

The plate consists of the name of the manufacturer, the equipment part number and important information for correct use of the equipment (air pressure, electric power,...).



AUTOMATIC AIRSPRAY GUN

A 25 - A26

Disassembly / Reassembly

TRANSLATION FROM THE ORIGINAL MANUAL

IMPORTANT : Before assembly and start-up, please read and clearly understand all the documents relating to the equipment (professional use only).

THE PICTURES AND DRAWINGS ARE NOT CONTRACTUAL. WE RESERVE THE RIGHT TO MAKE CHANGES WITHOUT PRIOR NOTICE.

KREMLIN - REXSON

150, avenue de Stalingrad

93 245 - STAINS CEDEX – France

☎ : 33 (0)1 49 40 25 25 **Fax** : 33 (0)1 48 26 07 16

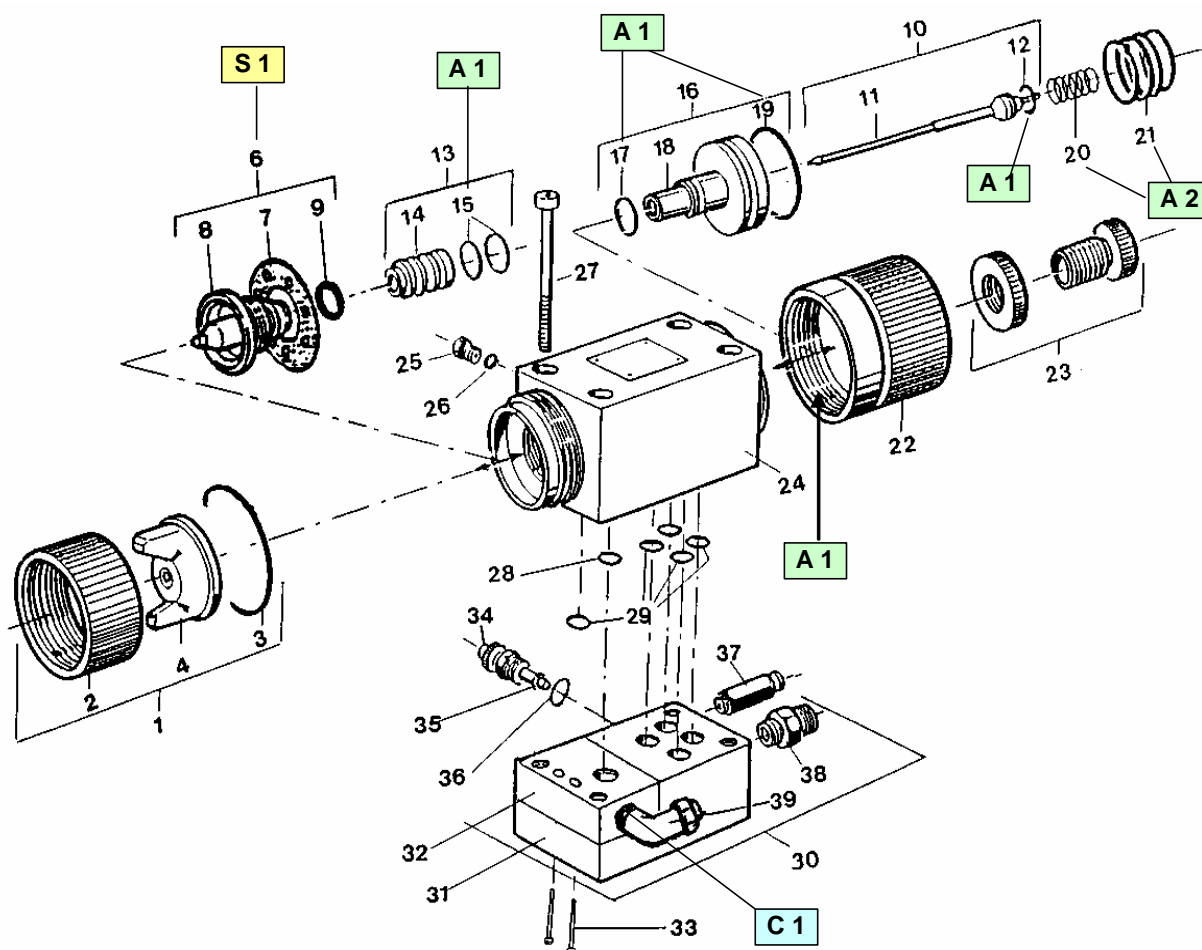
www.kremlin-rexson.com



CAUTION :

Before any intervention on the gun, shut off the compressed air supply and depressurize the circuits controlling the opening of the gun.

The gun is manufactured under the ATEX agreement and can not be modified. KREMLIN REXSON will not be held responsible for any failure to comply with that instruction.



Index	Instructions	Description	Part number
A 1	PTFE grease	"TECHNILUB" grease (10 ml)	560.440.101
A 2	Graphite grease	Graphite grease box (1 kg / 2.204 lb)	560.420.005
C 1	Medium strength Anaerobic Pipe sealant	Loctite 577	-
S 1	Screwing torque A 25, A 25 LP : 18 Nm / 13.28 ft/lbs A 25 HTi, A 26 HTi : 12 Nm / 8.8 ft/lbs		

Before removing a component of the gun, some precautions have to be respected :

- Empty out the paint inside the cup or the receiver.
- Fill the cup or the receiver with cleaning solvent.
- Decrease the supply air pressure of the gun.
- Spray the solvent until it runs clear.
- Shut off the supply air pressure of the gun.
- Trigger the gun to depressurize the circuit.
- Empty out the solvent when using a gravity cup.
- Remove the part to be cleaned or changed.

Before reassembling the different components, some precautions must be taken :

- **Clean all the parts with the appropriate cleaning solvent and a brush.**
- **Install new seals if it is necessary after having lubricated them with PTFE grease.**
- **Install new parts if it is necessary.**

▪ **CHANGING THE SPRAY GUN**

Shut off the air and product feeds to the gun.
Depressurize the circuits.
Remove the 4 screws (27).
Take out the gun.
Fit the replacement gun and change the seals (28 and 29).
Re-fit the 4 screws (27).

▪ **CARTRIDGE AND NEEDLE**

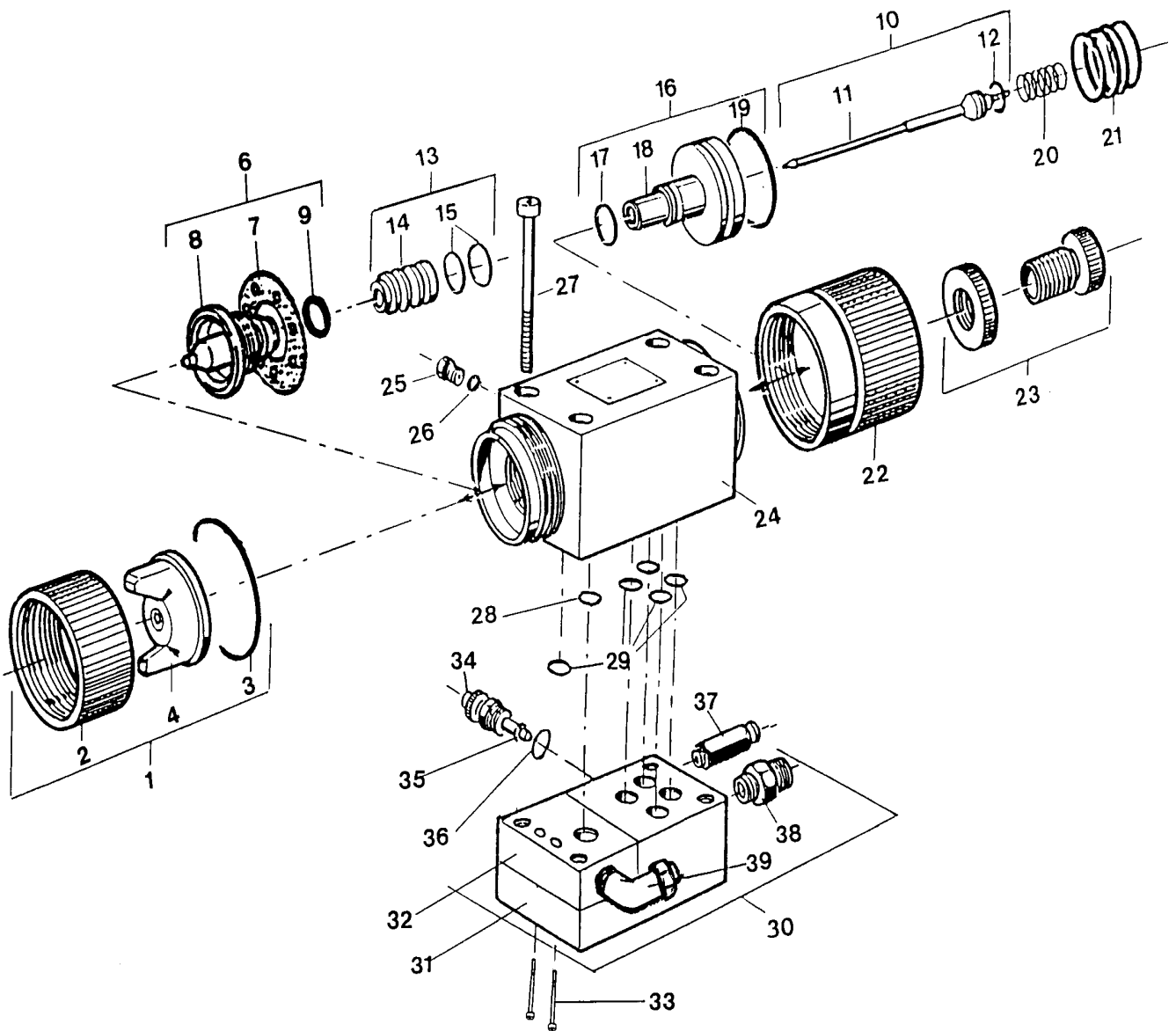
Unscrew the cylinder (22) - (paying attention to the springs (20 and 21).
Hold the entire needle and piston assembly (10 and 16) and pull it towards the back.
Remove the aircap (1) and the nozzle (6).
Loosen the screw (25) by two turns (fluid leakage detector).
Insert one of the screws (27) at the back in place of the needle and push or tap it until the cartridge (13) comes out at the front.
Clean everything well with solvent and then blow it out with air.
Push in the new cartridge from the front.

➡ **IMPORTANT : with the head of the screw (27), push the cartridge to the back. Tap it lightly if necessary.**

Re-tighten the fluid leakage detector (25).
Re-fit the needle and piston assembly (10 and 16).
Fit the springs (20 and 21).
Screw on the cylinder (22).
Re-fit the nozzle (6) and the aircap (1), having unscrewed the needle adjustment knob (23).

<p>Doc. 573.083.050 Date/Datum/Fecha : 17/07/13 Annule/Cancel/Ersetzt/Anula : 05/04/06</p>	<p>Modif. / Änderung : Mise à jour / Update / Aktualisierung / Actualización</p>	<p>Pièces de rechange Spare parts list Ersatzteilliste Piezas de repuesto</p>
--	---	--

<p>A 25</p>	<p>PISTOLET AUTOMATIQUE INOX (SANS EMBASE) AUTOMATIC SPRAY GUN (WITHOUT BASE) - STAINLESS STEEL AUTOMATIKPISTOLE EDELSTAHL (OHNE GRUNDPLATTE) PISTOLA AUTOMÁTICA INOX (SIN BASE)</p>
--------------------	---



**PISTOLET A 25 INOX SANS EMBASE / A 25 SPRAY GUN WITHOUT BASE
PISTOLE A 25 EDELSTAHL OHNE GRUNDPLATTE / PISTOLA A 25 INOX SIN BASE**

A 25	#	Viscosité produit / Material viscosity / Viskosität des Spritzmaterials / Viscosidad producto	Largeur de jet / Fan width / Strahlbreite / Anchura de abanico		Débit peinture / Material flow rate / Ausflussrate / Caudal pintura (cc/mn - oz/mn)
			CA4	Mini (cm / ")	
sans projecteur / without projector / ohne Zerstäubereinheit / sin proyector	129 260 000				
207 Z 23	135 260 001	Fluide 20 s	6 / 2.36"	40 / 15.74"	120 / 4
209 Z 23	135 260 002	Fluide 20 s	6 / 2.36"	40 / 15.74"	200 / 7
212 NN 23	135 260 010	Fluide 20 s	6 / 2.36"	60 / 23.62"	400 / 14
215 N 23	135 260 008	Normale 30 s	8 / 3.15"	50 / 19.68"	600 / 21
218 N 23	135 260 009	Epaisse > 40 s	8 / 3.15"	50 / 19.68"	750 / 26

PIECES DE RECHANGE - PARTS IDENTIFICATION LIST - ERSATZTEILLISTE - PIEZAS DE REPUESTO

Ind	#	Désignation	Description	Bezeichnung	Denominación	Qté
*1	-	Tête complète (voir tableau)	Aircap assembly (refer to chart)	Zerstäuberkopf kpl. (siehe Tabelle)	Cabezal completo (consultar cuadro)	1
2	032 020 001	• Bague de tête	• Aircap ring	• Überwurfring	• Anillo del cabezal	1
3	150 040 309	• Joint de bague (les 10)	• Seal, ring (pack of 10)	• O-Ring (10 St.)	• Junta del anillo (x 10)	1
4	NC / NS	• Tête nue	• Aircap only	• Luftkappe	• Cabezal solo	1
*6	-	Buse équipée (voir tableau)	Nozzle assembly (refer to chart)	Düse kpl. (siehe Tabelle)	Boquilla equipada (consultar cuadro)	1
7	129 729 902	• Bague de répartition (les 10)	• Distribution ring (pack of 10)	• Luftverteiler (10 St.)	• Anillo de distribución (bolsa de 10)	1
8	NC / NS	• Buse	• Nozzle	• Düse	• Boquilla	1
9	129 209 902	• Joint de buse (les 5)	• Seal, nozzle (pack of 5)	• O-Ring, Düse (5 St.)	• Junta de boquilla (x 5)	1
*10	-	Pointeau complet (voir tableau)	Needle assembly (refer to chart)	Farbnadel kpl. (siehe Tabelle)	Aguja completa (consultar cuadro)	1
11	NC / NS	• Pointeau	• Needle only	• Farbnadel	• Aguja	1
12	129 400 915	• Joint (les 10)	• Seal (pack of 10)	• O-Ring (10 St.)	• Junta (x 10)	1
*13	129 251 100	Cartouche complète	Cartridge assembly	Nadelpackung, kpl.	Cartucho completo	1
14	NC / NS	• Cartouche	• Cartridge	• Nadelpackung	• Cartucho	1
15	129 529 906	• Joint FPM (les 10)	• Seal, FPM (x 10)	• O-Ring, FPM (10 St.)	• Junta FPM (x 10)	2
*16	129 251 200	Piston équipé	Piston assembly	Kolben, kpl.	Pistón equipado	1
17	129 251 992	• Joint R8 (les 10)	• Seal, R8 (pack of 10)	• O-Ring, R8 (10 St.)	• Junta R8 (bolsa de 10)	1
18	NC / NS	• Piston seul	• Piston only	• Kolben, alein	• Pistón solo	1
19	129 251 993	• Joint R22 (les 10)	• Seal, R22 (pack of 10)	• O-Ring, R22 (10 St.)	• Junta R22 (bolsa de 10)	1

Ind	#	Désignation	Description	Bezeichnung	Denominación	Qté
*20	050 315 203	Ressort de pointeau	Spring, needle	Feder für Farbnadel	Muelle de aguja	1
*21	050 313 504	Ressort de piston	Spring, piston	Feder für Kolben	Muelle de pistón	1
22	029 251 401	Cylindre	Cylinder	Luftzylinder	Cilindro	1
23	129 251 750	Butée de pointeau complète	Adjustment knob assembly	Nadelanschlag, komplett	Tope de aguja completo	1
24	129 260 020	Corps	Body	Pistolenkörper	Cuerpo	1
25	029 266 002	Témoin de fuite	Detector, fluid leakage	Leckageanzeige	Testigo de fuga	1
26	129 529 903	Joint (les 10)	Seal (x 10)	Dichtung (10 St.)	Junta (bolsa de 10)	1
27	930 151 548	Vis CHc M 6 x 50	Screw, CHc M 6 x 50	Schraube M 6 x 50	Tornillo CHc M 6 x 50	4
28	129 525 092	Joint (les 10)	Seal (x 10)	Dichtung (10 St.)	Junta (bolsa de 10)	1
29	129 251 991	Joint (les 10)	Seal (x 10)	Dichtung (10 St.)	Junta (bolsa de 10)	5

	#	A LA DEMANDE	ON REQUEST	AUF WUNSCH	A PETICIÓN	
*30	129 260 300	Embase inox équipée	Stainless steel base assembly	Grundplatte Edelstahl, komplett	Base inox equipada	1
*-	129 260 315	• Embase inox nue, sans raccord	• Stainless steel base only, without fittings	• Grundplatte nackt, ohne Anschlüsse	• Base inox sola, sin racores	1
31	NC / NS	• Embase	• Base	• Grundplatte	• Base	1
32	NC / NS	• Insert inox	• Stainless steel insert	• Edelstahl Einsatz	• Inserto inox	1
33	933 151 221	• Vis CHc M 5 x 16	• Screw, CHc M 5 x 16	• Schraube M 5 x 16	• Tornillo CHc M 5 x 16	2
*34	129 253 100	• Pointeau des événements	• Fan air control	• Spritzstrahlregulierschraube	• Aguja control de abanico	1
*35	129 971 002	- Joint (les 10)	- Seal (x 10)	- Dichtung (10 St.)	- Junta (x 10)	1
36	129 529 907	- Joint (les 10)	- Seal (x 10)	- Dichtung (10 St.)	- Junta (x 10)	1
37	905 124 901	• Raccord (commande) M 1/8 BSP - T 4 x 6	• Quick disconnect (control) M 1/8 BSP - T 4 x 6	• Steckanschluss für Schlauch (Steuerung) AG 1/8 BSP - T 4 x 6	• Racor (aire de mando) M 1/8 BSP - T 4 x 6	1
38	050 102 624	• Raccord (air) M 1/4 BSP - M 1/4 NPS	• Fitting (air), double male, 1/4 BSP - 1/4 NPS	• Doppelnippel (Luft) AG 1/4 BSP - AG 1/4 NPS	• Racor (aire) M 1/4 BSP - M 1/4 NPS	1
39	905 190 401	• Raccord coudé (produit) - M 1/4 BSP - T 6 x 8	• Elbow fitting (fluid) M 1/4 BSP - T 6 x 8	• Winkelnippel (Material) AG 1/4 BSP - T 6 x 8	• Racor acodado (producto) M 1/4 BSP - T 4 x 6	2
-	906 333 102	• Bouchon 1/4 G	• Plug, 1/4 G	• Blindstopfen, 1/4 G	• Tapón, 1/4 G	1
*	129 251 995	Pochette de joints (ind. 9, 12, 15, 17, 19, 26, 28, 29, 36)	Package of seals (ind. 9, 12, 15, 17, 19, 26, 28, 29, 36)	Dichtungssatz (Pos. 9, 12, 15, 17, 19, 26, 28, 29, 36)	Kit de juntas "reparación" (ind. 9, 12, 15, 17, 19, 26, 28, 29, 36)	1

* Pièces de maintenance préconisées.

* Preceding the index number denotes a suggested spare part.

* Bezeichnete Teile sind empfohlene Ersatzteile.

* Piezas de mantenimiento preventivas.

NC : Non commercialisé.

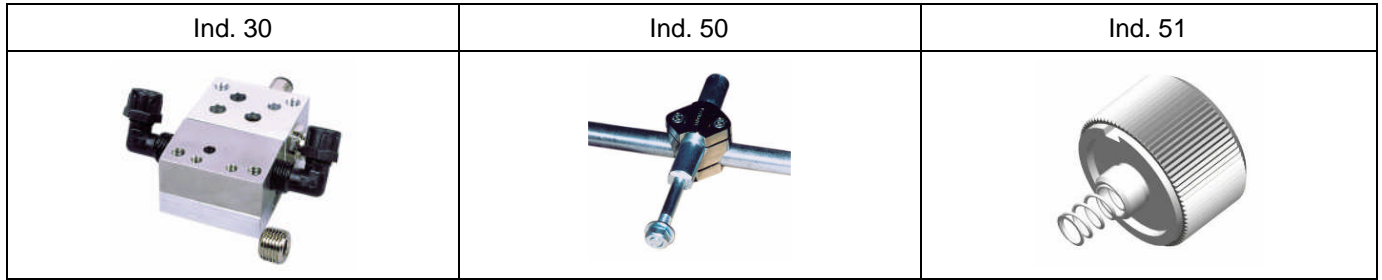
NS : Denotes parts are not serviceable separately.

NS : bezeichnete Teile gibt es nicht einzeln, sondern nur komplett.

NC : no suministrado.

ACCESSOIRES - ACCESSORIES - ZUBEHÖR - ACCESORIOS

Ind	#	Désignation	Description	Bezeichnung	Denominación	Qté
-	029 253 002	Kit pour commande air à distance	Remote fan width adjustor	Kit für Spritzstrahl-Fernverstellung	Kit para mando aire a distancia	1
50	049 351 000	Support de fixation pour pistolet (Ø 16 longueur : 100 mm)	Gun mounting support (Ø 16 / 5/8" Length : 100 mm / 4 ")	Pistolenhalterug (Ø 16 – Länge: 100 mm)	Soporte de fijación para pistola (Ø 16 longitud : 100 mm)	1
51	129 251 500	Butée de pointe avec indexage	Indexed needle adjust kit	Indexiertes Nadeleinstellset	Kit de regulación indexado para el botón aguja	1



Projecteur / Projector / Zerstäubereinheiten / Proyector	Tête / Aircap Luftkappe / Cabezal	Buse / Nozzle Düse / Boquilla	Pointeau / Needle Nadel / Aguja
--	--------------------------------------	----------------------------------	------------------------------------

Ind. 1+6+10	Ind. 1	#	Ind. 6	Ø (mm / ")	#	Ind. 10	#
207 Z 23	Z 23	132 021 100	207	0,7 / 0.027	134 021 100	7 - 9 - 12	033 251 100
209 Z 23	Z 23	132 021 100	209	0,9 / 0.035	134 020 100	7 - 9 - 12	033 251 100
212 Z 23	Z 23	132 021 100	212	1,2 / 0.047	134 020 200	7 - 9 - 12	033 251 100
212 N N 23	N 23	132 021 200	212 N	1,2 / 0.047	134 020 500	7 - 9 - 12	033 251 100
207 Z 23 A	Z 23 A	132 020 500	207	0,7 / 0.027	134 021 100	7 - 9 - 12	033 251 100
209 Z 23 A	Z 23 A	132 020 500	209	0,9 / 0.035	134 020 100	7 - 9 - 12	033 251 100
212 Z 23 A	Z 23 A	132 020 500	212	1,2 / 0.047	134 020 200	7 - 9 - 12	033 251 100
212 N N 23 C	N 23 C	132 021 700	212 N	1,2 / 0.047	134 020 500	7 - 9 - 12	033 251 100
215 N 23	N 23	132 021 200	215	1,5 / 0.059	134 020 300	15 - 18	033 251 200
218 N 23	N 23	132 021 200	218	1,8 / 0.071	134 020 400	15 - 18	033 251 200
222 R 23	R 23	132 021 300	222	2,2 / 0.087	134 020 600	22 - 27	033 251 300
227 R 23	R 23	132 021 300	227	2,7 / 0.106	134 020 700	22 - 27	033 251 300

Jet rond tourbillonnaire / Swirling round fan spraying / Rund-Drallstrahl / Abanico redondo turbulento

222 R 29	R 29	132 021 400	222	2,2 / 0.087	134 020 600	22 - 27	033 251 300
227 R 29	R 29	132 021 400	227	2,7 / 0.106	134 020 700	22 - 27	033 251 300

Pour application émail / For enamel application / Für Emaille-Applikation / Para aplicación esmalte

222 R 24	R 24	132 021 800	222	2,2 / 0.087	134 020 600	22 - 27	033 251 300
227 R 24	R 24	132 021 800	227	2,7 / 0.106	134 020 700	22 - 27	033 251 300

Pour application colle / For glue application / Für Kleber-Applikation / Para aplicación cola

215 G G 21	G 21	132 021 600	215 G	1,5 / 0.059	134 021 200	15 - 18	033 251 200
218 G G 21	G 21	132 021 600	218 G	1,8 / 0.071	134 021 300	15 - 18	033 251 200

Tête en laiton / Aircap in brass / Luftkappe aus Messing / Cabezal de latón	Buses traitées / Treated stainless steel nozzle / Gehärtete Düse / Boquillas tratadas	Pointeaux traités / Treated stainless steel needle / Gehärtete Materialnadel / Agujas tratadas	Pointeaux en polyacétal / Needle (polyacetal) / Nadel mit Polyacetal-Spitze / Agujas de poliacetato
--	--	---	--

	#		#		#		#
Z 23 A	132 020 550	207 T	134 025 050	07 - 09 T	033 251 050	07 - 09 - 12 P	033 251 400
N 23 C	132 021 750	209 T	134 025 100	07 - 09 T	033 251 050	14 - 15 - 18 P	033 251 410
		212 T	134 025 200	12 T	033 251 700		
		215 T	134 025 300	15 - 18 T	033 251 500		
		218 T	134 025 400	15 - 18 T	033 251 500		
		222 T	134 025 600	22 - 27 T	033 251 600		
		227 T	134 025 700	22 - 27 T	033 251 600		

Allonge / Extension / Verlängerungen / Alargaderas

-	Allonge Ø 8, longueur : 150 mm, jet latéral	Extension Ø 8 mm / 0.31", length : 150 mm / 5.9", lateral fan	Verlängerung Ø 8, Länge : 150 mm, Seitenstrahl	Alargaderas Ø 8, longitud : 150, abanico lateral
075 650 213	• Buse de 12	• Nozzle 12	• Düse Gr. 12	• Boquilla de 12
075 650 224	• Buse de 18	• Nozzle 18	• Düse Gr. 18	• Boquilla de 18
-	Allonge Ø 8, longueur : 250 mm, jet latéral	Extension Ø 8 mm / 0.31", length : 250 mm / 9.8", lateral fan	Verlängerung Ø 8, Länge: 250 mm, Seitenstrahl	Alargaderas Ø 8, longitud : 250 mm, abanico lateral
075 650 111	• Buse de 12	• Nozzle 12	• Düse Gr. 12	• Boquilla de 12
075 650 122	• Buse de 18	• Nozzle 18	• Düse Gr. 18	• Boquilla de 18
-	Allonge Ø 8, longueur : 400 mm, jet latéral	Extension Ø 8 mm / 0.31", length : 400 mm / 15.7", lateral fan	Verlängerung Ø 8, Länge: 400 mm, Seitenstrahl	Alargaderas Ø 8, longitud : 400, abanico lateral
075 650 311	• Buse de 12	• Nozzle 12	• Düse Gr. 12	• Boquilla de 12
075 650 322	• Buse de 18	• Nozzle 18	• Düse Gr. 18	• Boquilla de 18

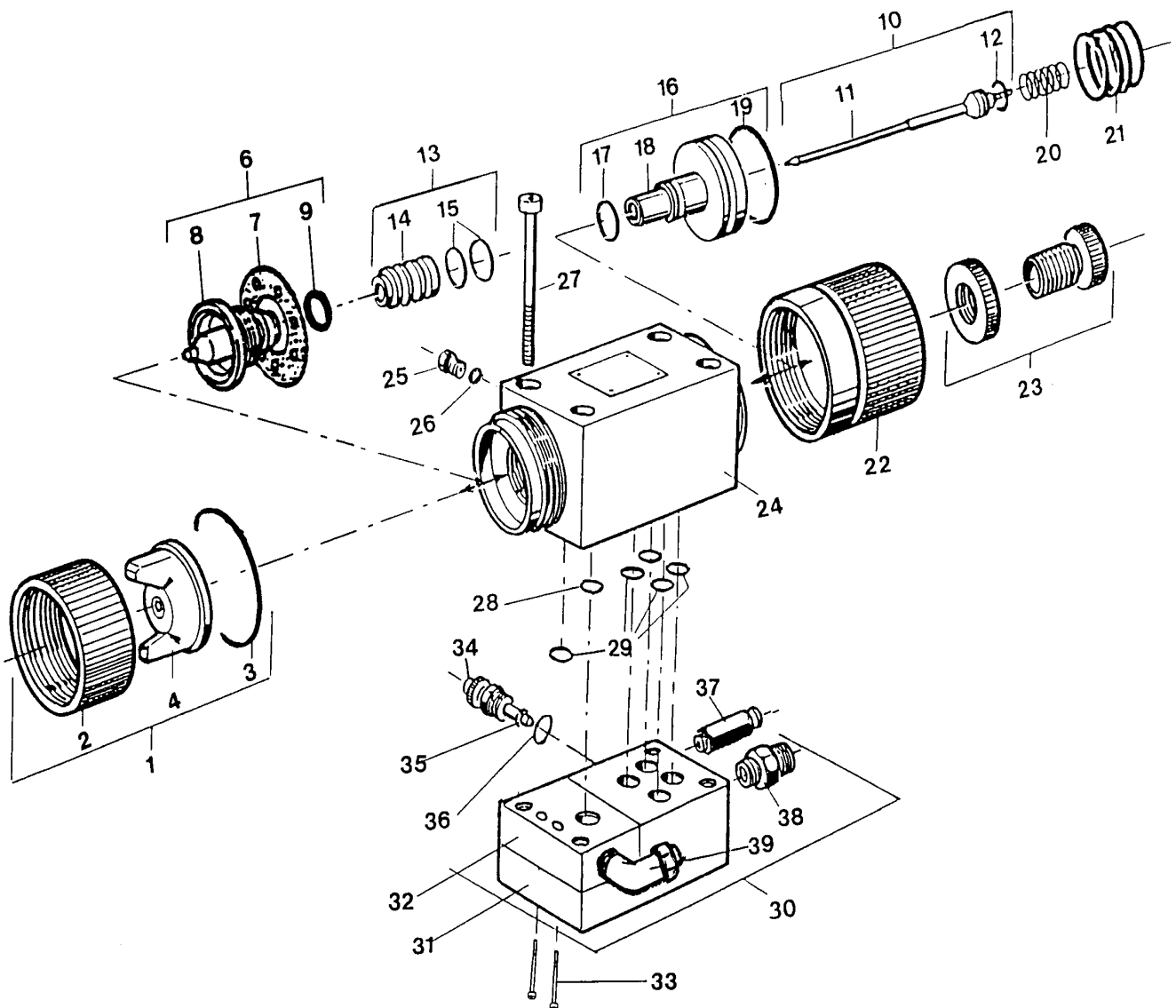
075 750 111	Allonge Ø 20, longueur : 400 mm, jet circulaire	Extension Ø 20 mm / 0.8", length : 400 mm / 15.7", circular fan	Verlängerung Ø 20, Länge: 400 mm, Kreisstrahl	Alargaderas Ø 20, longitud : 400 mm, abanico circular
075 750 211	Allonge Ø 20, longueur : 800 mm, jet circulaire	Extension Ø 20 mm / 0.8", length 800 mm / 31.5", circular fan	Verlängerung Ø 20, Länge: 800 mm, Kreisstrahl	Alargaderas Ø 20, longitud : 800 mm, abanico circular

OPTION / OPTIONAL / OPTIONAL / OPCIÓN

Ind	#	Désignation	Description	Bezeichnung	Denominación	Qté
15	109 420 257	Joint EPDM (les 10)	Seal, EPDM (x 10)	O-Ring, EPDM (10 St.)	Junta EPDM (x 10)	2

<p>Doc. 573.084.050 Date/Datum/Fecha : 17/07/13 Annule/Cancel/Ersetzt/Anula : 05/04/06</p>	<p>Modif. / Änderung : Mise à jour / Update / Aktualisierung / Actualización</p>	<p>Pièces de rechange Spare parts list Ersatzteilliste Piezas de repuesto</p>
--	---	--

<p>A 25 LP</p>	<p>PISTOLET AUTOMATIQUE INOX (SANS EMBASE) AUTOMATIC SPRAY GUN (WITHOUT BASE) - STAINLESS STEEL AUTOMATIKPISTOLE EDELSTAHL (OHNE GRUNDPLATTE) PISTOLA AUTOMÁTICA INOX (SIN BASE)</p>
-----------------------	---



**PISTOLET A 25 LP INOX SANS EMBASE / A 25 LP SPRAY GUN WITHOUT BASE
PISTOLE A 25 LP EDELSTAHL OHNE GRUNDPLATTE / PISTOLA A 25 LP INOX SIN BASE**

A 25 LP	#	Viscosité produit / Material viscosity / Viskosität des Spritzmaterials / Viscosidad producto	Largeur de jet / Fan width / Strahlbreite / Anchura de abanico		Débit peinture / Material flow rate / Ausflussrate / Caudal pintura (cc/mn - oz/mn)
			CA4	Mini (cm / ")	
sans projecteur / without projector / ohne Zerstäubereinheit / sin proyector	129 265 000				
+ 209 LP 23	135 265 001	Fluide 20 s	6 / 2.36"	35 / 13.78"	200 / 7
+ 212 LP 23	135 265 002	Fluide 20 s	6 / 2.36"	35 / 13.78"	350 / 12

PIECES DE RECHANGE - PARTS IDENTIFICATION LIST - ERSATZTEILLISTE - PIEZAS DE REPUESTO

Ind	#	Désignation	Description	Bezeichnung	Denominación	Qté
*1	-	Tête complète (voir tableau)	Aircap assembly (refer to chart)	Zerstäuberkopf kpl. (siehe Tabelle)	Cabezal completo (consultar cuadro)	1
2	032 020 001	• Bague de tête	• Aircap ring	• Überwurfring	• Anillo del cabezal	1
3	150 040 309	• Joint de bague (les 10)	• Seal, ring (pack of 10)	• O-Ring (10 St.)	• Junta del anillo (x 10)	1
4	NC / NS	• Tête nue	• Aircap only	• Luftkappe	• Cabezal solo	1
*6	-	Buse équipée (voir tableau)	Nozzle assembly (refer to chart)	Düse kpl. (siehe Tabelle)	Boquilla equipada (consultar cuadro)	1
7	129 729 902	• Bague de répartition (les 10)	• Distribution ring (pack of 10)	• Luftverteillerring (10 St.)	• Anillo de distribución (bolsa de 10)	1
8	NC / NS	• Buse	• Nozzle	• Düse	• Boquilla	1
9	129 209 902	• Joint de buse (les 5)	• Seal, nozzle (pack of 5)	• O-Ring, Düse (5 St.)	• Junta de boquilla (x 5)	1
*10	-	Pointeau complet (voir tableau)	Needle assembly (refer to chart)	Farbnadel kpl. (siehe Tabelle)	Aguja completa (consultar cuadro)	1
11	NC / NS	• Pointeau	• Needle only	• Farbnadel	• Aguja	1
12	129 400 915	• Joint (les 10)	• Seal (pack of 10)	• O-Ring (10 St.)	• Junta (x 10)	1
*13	129 251 100	Cartouche complète	Cartridge assembly	Nadelpackung, kpl.	Cartucho completo	1
14	NC / NS	• Cartouche	• Cartridge	• Nadelpackung	• Cartucho	1
15	129 529 906	• Joint FPM (les 10)	• Seal, FPM (x 10)	• O-Ring, FPM (10 St.)	• Junta FPM (x 10)	2
*16	129 251 200	Piston équipé	Piston assembly	Kolben, kpl.	Pistón equipado	1
17	129 251 992	• Joint R8 (les 10)	• Seal, R8 (pack of 10)	• O-Ring, R8 (10 St.)	• Junta R8 (bolsa de 10)	1
18	NC / NS	• Piston seul	• Piston only	• Kolben, einzeln	• Pistón solo	1
19	129 251 993	• Joint R22 (les 10)	• Seal, R22 (pack of 10)	• O-Ring, R22 (10 St.)	• Junta R22 (bolsa de 10)	1

Ind	#	Désignation	Description	Bezeichnung	Denominación	Qté
*20	050 315 203	Ressort de pointeau	Spring, needle	Feder für Farbnadel	Muelle de aguja	1
*21	050 313 504	Ressort de piston	Spring, piston	Feder für Kolben	Muelle de pistón	1
22	029 251 401	Cylindre	Cylinder	Luftzylinder	Cilindro	1
23	129 251 750	Butée de pointeau complète	Adjustment knob assembly	Nadelanschlag, komplett	Tope de aguja completo	1
24	129 265 010	Corps	Body	Pistolenkörper	Cuerpo	1
25	029 266 002	Témoin de fuite	Detector, fluid leakage	Leckageanzeige	Testigo de fuga	1
26	129 529 903	Joint (les 10)	Seal (x 10)	Dichtung (10 St.)	Junta (bolsa de 10)	1
27	930 151 548	Vis CHc M 6 x 50	Screw, CHc M 6 x 50	Schraube M 6 x 50	Tornillo CHc M 6 x 50	4
28	129 525 092	Joint (les 10)	Seal (x 10)	Dichtung (10 St.)	Junta (bolsa de 10)	1
29	129 251 991	Joint (les 10)	Seal (x 10)	Dichtung (10 St.)	Junta (bolsa de 10)	5

	#	A LA DEMANDE	ON REQUEST	AUF WUNSCH	A PETICIÓN	
*30	129.260.300	Embase inox équipée	Stainless steel base assembly	Grundplatte Edelstahl, komplett	Base inox equipada	1
*	129 260 315	• Embase inox nue, sans raccord	• Stainless steel base only, without fittings	• Grundplatte nackt, ohne Anschlüsse	• Base inox sola, sin racores	1
31	NC / NS	• Embase	• Base	• Grundplatte	• Base	1
32	NC / NS	• Insert inox	• Stainless steel insert	• Edelstahl Einsatz	• Inserto inox	1
33	933 151 221	• Vis CHc M 5 x 16	• Screw, CHc M 5 x 16	• Schraube M 5 x 16	• Tornillo CHc M 5 x 16	2
*34	129 253 100	• Pointeau des événements	• Fan air control	• Spritzstrahlregulierschraube	• Aguja control de abanico	1
*35	129 971 002	- Joint (les 10)	- Seal (x 10)	- Dichtung (10 St.)	- Junta (x 10)	1
36	129 529 907	- Joint (les 10)	- Seal (x 10)	- Dichtung (10 St.)	- Junta (x 10)	1
37	905 124 901	• Raccord (commande) M 1/8 BSP - T 4 x 6	• Quick disconnect (control) M 1/8 BSP - T 4 x 6	• Steckanschluss für Schlauch (Steuerung) AG 1/8 BSP - T 4 x 6	• Racor (aire de mando) M 1/8 BSP - T 4 x 6	1
38	050 102 624	• Raccord (air) - M 1/4 BSP - M 1/4 NPS	• Fitting (air), double male, 1/4 BSP - 1/4 NPS	• Doppelnippel (Luft) AG 1/4 BSP - AG 1/4 NPS	• Racor (aire) M 1/4 BSP- M 1/4 NPS	1
39	905 190 401	• Raccord coudé (produit) - M 1/4 BSP - T 6 x 8	• Elbow fitting (fluid) M 1/4 BSP - T 6 x 8	• Winkelnippel (Material) AG 1/4 BSP - T 6 x 8	• Racor acodado (producto) M 1/4 BSP - T 4 x 6	2
-	906 333 102	• Bouchon 1/4 G	• Plug, 1/4 G	• Blindstopfen, 1/4 G	• Tapón, 1/4 G	1
*	129 251 995	Pochette de joints (ind. 9, 12, 15, 17, 19, 26, 28, 29, 36)	Package of seals (ind. 9, 12, 15, 17, 19, 26, 28, 29, 36)	Dichtungssatz (Pos. 9, 12, 15, 17, 19, 26, 28, 29, 36)	Kit de juntas "reparación" (índ. 9, 12, 15, 17, 19, 26, 28, 29, 36)	1

* Pièces de maintenance préconisées.

* Preceding the index number denotes a suggested spare part.

* Bezeichnete Teile sind empfohlene Ersatzteile.

* Piezas de mantenimiento preventivas.

N C : Non commercialisé.

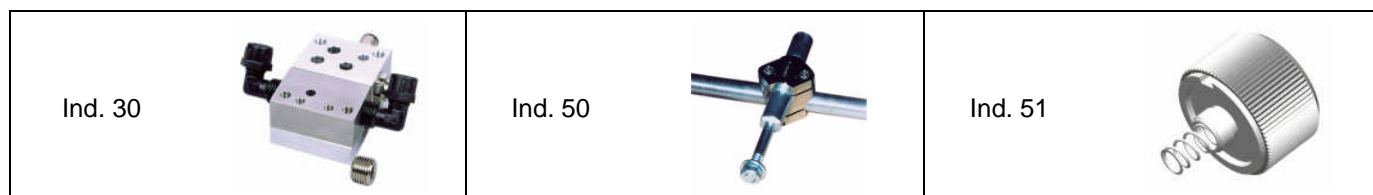
N S : Denotes parts are not serviceable separately.

N S : bezeichnete Teile gibt es nicht einzeln, sondern nur komplett.

N C : no suministrado.

ACCESSOIRES - ACCESSORIES - ZUBEHÖR - ACCESORIOS

Ind	#	Désignation	Description	Bezeichnung	Denominación	Qté
-	029 253 002	Kit pour commande air à distance	Remote fan width adjustor	Kit für Spritzstrahl-Fernverstellung	Kit para mando aire a distancia	1
50	049 351 000	Support de fixation pour pistolet (Ø 16 longueur : 100 mm)	Gun mounting support (Ø 16 / 5/8" Length : 100 mm / 4 ")	Pistolenhalterug (Ø 16 - Länge: 100 mm)	Soporte de fijación para pistola (Ø 16 longitud : 100 mm)	1
51	129 251 500	Butée de pointe avec indexage	Indexed needle adjust kit	Indexiertes Nadeleinstellset	Kit de regulación indexado para el botón aguja	1




Projecteur / Projector / Zerstäubereinheiten / Proyector	Tête / Aircap / Luftkappe / Cabezal		Buse / Nozzle / Düse / Boquilla			Pointeau / Needle / Nadel / Aguja	
	Ind. 1	#	Ind. 6	Ø (mm / ")	#	Ind. 10	#
Ind. 1+6+10							
207 LP 23	LP 23	132 060 100	207	0,7 / 0.027	134 021 100	7 - 9 - 12	033 251 100
209 LP 23	LP 23	132 060 100	209	0,9 / 0.035	134 020 100	7 - 9 - 12	033 251 100
212 LP 23	LP 23	132 060 100	212	1,2 / 0.047	134 020 200	7 - 9 - 12	033 251 100
207 N 23 C	N 23 C	132 021 700	207	0,7 / 0.027	134 021 100	7 - 9 - 12	033 251 100
209 N 23 C	N 23 C	132 021 700	209	0,9 / 0.035	134 020 100	7 - 9 - 12	033 251 100
212 N 23 C	N 23 C	132 021 700	212	1,2 / 0.047	134 020 200	7 - 9 - 12	033 251 100

OPTIONS - ON REQUEST - OPTIONAL - OPCIÓN

Ind	#	Désignation	Description	Bezeichnung	Denominación	Qté
15	109 420 257	Joint EPDM (les 10)	Seal, EPDM (x 10)	O-Ring, EPDM (10 St.)	Junta EPDM (x 10)	2

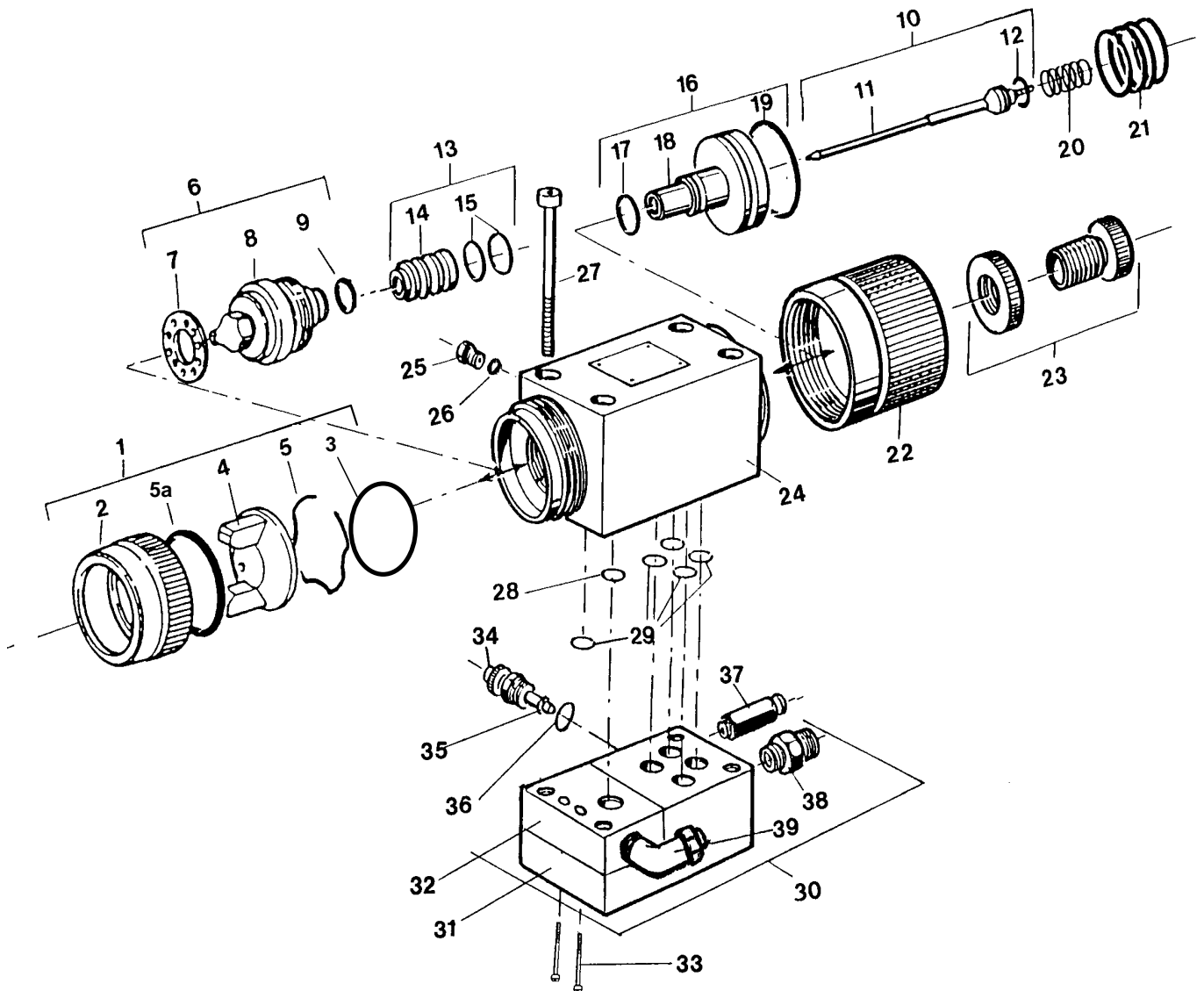
Tête en laiton / Aircap in brass / Luftkappe aus Messing / Cabezal de latón		Buses traitées / Treated stainless steel nozzle / Gehärtete Düse / Boquillas tratadas		Pointeaux traités / Treated stainless steel needle / Gehärtete Nadel / Aguja tratadas		Pointeaux en polyacétal / Needle (polyacetal) / Nadel mit Polyacetal-Spitze / Aguja de poliacetato	
#	#	#	#	#	#	#	#
N 23 C	132 021 750	207 T	134 025 050	07 - 09 T	033 251 050	07 - 09 - 12 P	033 251 400
		209 T	134 025 100	07 - 09 T	033 251 050		
		212 T	134 025 200	12 T	033 251 700		

TETE DE CONTROLE / AIR CAP WITH TEST GAUGE / LUFTDRUCK-KONTROLLSET / CABEZAL DE CONTROL

#	Désignation	Description	Bezeichnung	Denominación
 132 065 110	Tête LP 23 avec manomètre	LP 23 air cap with gauge	Luftkappe LP 23 mit Manometer	Cabezal LP 23 con manómetro
132 021 710	Tête N 23 C avec manomètre	N 23 C air cap with gauge	Luftkappe N 23 C mit Manometer	Cabezal N 23 C con manómetro

Doc. 573.315.050 Date/Datum/Fecha : 17/07/13 Annule/Cancel/Ersetzt/Anula : 05/04/06	Modif. / Änderung : Ind. / Pos. 62 supprimé / canceled / annulliert / suprimido	Pièces de rechange Spare parts list Ersatzteilliste Piezas de repuesto
--	---	---

A 25 HTi	PISTOLET AUTOMATIQUE INOX (SANS EMBASE) AUTOMATIC SPRAY GUN (WITHOUT BASE) - STAINLESS STEEL AUTOMATIKPISTOLE EDELSTAHL (OHNE GRUNDPLATTE) PISTOLA AUTOMÁTICA INOX (SIN BASE)
-----------------	--



**PISTOLET A 25 HTi INOX SANS EMBASE / A 25 HTi SPRAY GUN WITHOUT BASE
PISTOLE A 25 HTi EDELSTAHL OHNE GRUNDPLATTE / PISTOLA A 25 HTi INOX SIN BASE**

A 25 HTi	#
sans projecteur / without projector / ohne Zerstäubereinheit / sin proyector	129 268 000
+ 07 H 3 KHVLP	135 268 001
+ 09 H 3 KHVLP	135 268 002
+ 12 H 3 KHVLP	135 268 003

Projecteur / Projector / Zerstäubereinheiten / Projector	Tête / Aircap Luftkappe / Cabezal	Buse / Nozzle Düse / Boquilla	Pointeau / Needle Nadel / Aguja
--	--------------------------------------	----------------------------------	------------------------------------

Ind. 1+6+10	#	Ind. 1	#	Ind. 6	Ø (mm / ")	#	Ind. 10	#
07 H 3 KHVLP	031 268 006	H 3 KHVLP	132 120 100	H 7	0,7 / 0.027	134 080 100	07 - 09 - 12	033 251 100
09 H 3 KHVLP	031 268 007			H 9	0,9 / 0.035	134 080 200		
12 H 3 KHVLP	031 268 008			H 12	1,2 / 0.047	134 080 300		

PIECES DE RECHANGE - PARTS IDENTIFICATION LIST - ERSATZTEILLISTE - PIEZAS DE REPUESTO

Ind	#	Désignation	Description	Bezeichnung	Denominación	Qté
*1	-	Tête complète (voir tableau)	Aircap assembly (refer to chart)	Zerstäuberkopf kpl. (siehe Tabelle)	Cabezal completo (consultar cuadro)	1
2	032 020 001	• Bague de tête	• Aircap ring	• Überwurfring	• Anillo del cabezal	1
3	150 040 309	• Joint de bague (les 10)	• Seal, ring (pack of 10)	• O-Ring (10 St.)	• Junta del anillo (x 10)	1
4	NC / NS	• Tête nue	• Aircap only	• Luftkappe	• Cabezal solo	1
5	032 200 103	• Anneau de retenue	• Retaining ring	• Sicherungsring	• Anillo de retención	1
5a	129 080 007	• Joint de tête (les 2)	• Seal, aircap (pack of 2)	• O-Ring (2 St.)	• Junta del cabezal (x2)	1
*6	-	Buse équipée (voir tableau)	Nozzle assembly (refer to chart)	Düse kpl. (siehe Tabelle)	Boquilla equipada (consultar cuadro)	1
7	134 056 102	• Bague de répartition (les 10)	• Distribution ring (pack of 10)	• Luftverteilerring (10 St.)	• Anillo de distribución (bolsa de 10)	1
8	NC / NS	• Buse	• Nozzle	• Düse	• Boquilla	1
9	129 209 902	• Joint de buse (les 5)	• Seal, nozzle (pack of 5)	• O-Ring, Düse (5 St.)	• Junta de boquilla (x 5)	1
*10	-	Pointeau complet (voir tableau)	Needle assembly (refer to chart)	Farbnadel kpl. (siehe Tabelle)	Aguja completa (consultar cuadro)	1
11	NC / NS	• Pointeau	• Needle only	• Farbnadel	• Aguja	1
12	129 400 915	• Joint (les 10)	• Seal (pack of 10)	• O-Ring (10 St.)	• Junta (x 10)	1
*13	129 251 100	Cartouche complète	Cartridge assembly	Nadelpackung, kpl.	Cartucho completo	1
14	NC / NS	• Cartouche	• Cartridge	• Nadelpackung	• Cartucho	1
15	129 529 906	• Joint FPM (les 10)	• Seal, FPM (x 10)	• O-Ring, FPM (10 St.)	• Junta FPM (x 10)	2

Ind	#	Désignation	Description	Bezeichnung	Denominación	Qté
*16	129 251 200	Piston équipé	Piston assembly	Kolben, kpl.	Pistón equipado	1
17	129 251 992	• Joint R8 (les 10)	• Seal, R8 (pack of 10)	• O-Ring, R8 (10 St.)	• Junta R8 (bolsa de 10)	1
18	NC / NS	• Piston seul	• Piston only	• Kolben, einzeln	• Pistón solo	1
19	129 251 993	• Joint R22 (les 10)	• Seal, R22 (pack of 10)	• O-Ring, R22 (10 St.)	• Junta R22 (bolsa de 10)	1
*20	050 315 203	Ressort de pointeau	Spring, needle	Feder für Farbnadel	Muelle de aguja	1
*21	050 313 504	Ressort de piston	Spring, piston	Feder für Kolben	Muelle de pistón	1
22	029 251 401	Cylindre	Cylinder	Luftzylinder	Cilindro	1
23	129 251 750	Butée de pointeau complète	Adjustment knob assembly	Nadelanschlag, komplett	Tope de aguja completo	1
24	129 268 020	Corps	Body	Pistolenkörper	Cuerpo	1
25	029 266 002	Témoin de fuite	Detector, fluid leakage	Leckageanzeige	Testigo de fuga	1
26	129 529 903	Joint (les 10)	Seal (x 10)	Dichtung (10 St.)	Junta (bolsa de 10)	1
27	930 151 548	Vis CHc M 6 x 50	Screw, CHc M 6 x 50	Schraube M 6 x 50	Tornillo CHc M 6 x 50	4
28	129 525 092	Joint (les 10)	Seal (x 10)	Dichtung (10 St.)	Junta (bolsa de 10)	1
29	129 251 991	Joint (les 10)	Seal (x 10)	Dichtung (10 St.)	Junta (bolsa de 10)	5

	#	A LA DEMANDE	ON REQUEST	AUF WUNSCH	A PETICIÓN	
*30	129.260.300	Embaise inox équipée	Stainless steel base assembly	• Grundplatte kpl. Edelstahl	Base inox equipada	1
*	129 260 315	• Embaise inox nue, sans raccord	• Stainless steel base only, without fittings	• Grundplatte nackt, ohne Anschlüsse	• Base inox sola, sin racores	1
31	NC / NS	• Embaise	• Base	• Grundplatte	• Base	1
32	NC / NS	• Insert inox	• Stainless steel insert	• Edelstahl Einsatz	• Inserto inox	1
33	933 151 221	• Vis CHc M 5 x 16	• Screw, CHc M 5 x 16	• Schraube M 5 x 16	• Tornillo CHc M 5 x 16	2
*34	129 253 100	• Pointeau des événements	• Fan air control	• Spritzstrahlregulierschraube	• Aguja control de abanico	1
*35	129 971 002	– Joint (les 10)	– Seal (x 10)	– Dichtung (10 St.)	– Junta (x 10)	1
36	129 529 907	– Joint (les 10)	– Seal (x 10)	– Dichtung (10 St.)	– Junta (x 10)	1
37	905 124 901	• Raccord (commande) M 1/8 BSP - T 4 x 6	• Quick disconnect (control) M 1/8 BSP - T 4 x 6	• Steckanschluss für Schlauch (Steuerung) AG 1/8 BSP - T 4 x 6	• Racor (aire de mando) M 1/8 BSP - T 4 x 6	1
38	050 102 624	• Raccord (air) - M 1/4 BSP - M 1/4 NPS	• Fitting (air), double male, 1/4 BSP - 1/4 NPS	• Doppelnippel (Luft) AG 1/4 BSP - AG 1/4 NPS	• Racor (aire) M 1/4 BSP- M 1/4 NPS	1
39	905 190 401	• Raccord coudé (produit) - M 1/4 BSP - T 6 x 8	• Elbow fitting (fluid) M 1/4 BSP - T 6 x 8	• Winkelnippel (Material) AG 1/4 BSP - T 6 x 8	• Racor acodado (producto) M 1/4 BSP - T 4 x 6	2
-	906 333 102	• Bouchon 1/4 G	• Plug, 1/4 G	• Blindstopfen, 1/4 G	• Tapón, 1/4 G	1

* Pièces de maintenance préconisées.

* Preceding the index number denotes a suggested spare part.

* Bezeichnete Teile sind empfohlene Ersatzteile.

* Piezas de mantenimiento preventivas.

N C : Non commercialisé.

N S : Denotes parts are not serviceable separately.

N S : bezeichnete Teile gibt es nicht einzeln, sondern nur komplett.

N C : no suministrado.

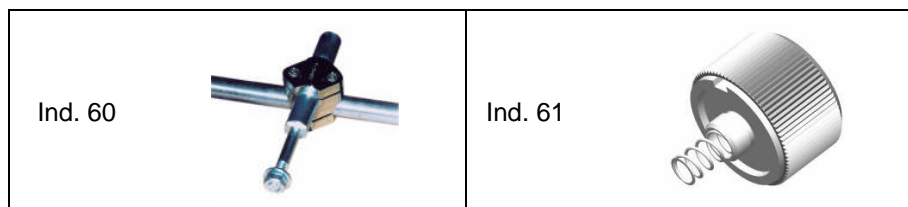
Ind	#	Désignation	Description	Bezeichnung	Denominación	Qté
50	049 030 021	Clé plate KREMLIN	KREMLIN gun wrench	Pistolenschlüssel	Llave para pistola	1
51	906 300 101	Goupillon	Large size brush	Pistolen-Reinigungsbürste, groß	Cepillo grande	1



Ind	#	Désignation	Description	Bezeichnung	Denominación	Qté
*	129 251 995	Pochette de joints (ind. 9, 12, 15, 17, 19, 26, 28, 29, 36)	Package of seals (ind. 9, 12, 15, 17, 19, 26, 28, 29, 36)	Dichtungssatz (Pos. 9, 12, 15, 17, 19, 26, 28, 29, 36)	Kit de juntas "reparación" (ind. 9, 12, 15, 17, 19, 26, 28, 29, 36)	1

ACCESSOIRES - ACCESSORIES - ZUBEHÖR - ACCESORIOS

Ind	#	Désignation	Description	Bezeichnung	Denominación	Qté
-	029 253 002	Kit pour commande air à distance	Remote fan width adjustor	Kit für Spritzstrahl-Fernverstellung	Kit para mando aire a distancia	1
60	049 351 000	Support de fixation pour pistolet (Ø 16 longueur : 100 mm)	Gun mounting support (Ø 16 / 5/8" Length : 100 mm / 4 ")	Pistolhalterug (Ø 16 - Länge: 100 mm)	Soporte de fijación para pistola (Ø 16 longitud : 100 mm)	1
61	129 251 500	Butée de pointe avec indexage	Indexed needle adjust kit	Indexiertes Nadeleinstellset	Kit de regulación indexado para el botón aguja	1



#	Désignation	Description	Bezeichnung	Denominación
	Tuyau air Ø 8 (Raccord F 1/4 NPS)	Air hose Ø 8 (Fitting, F 1/4 NPS)	Luftschlauch Ø 8 (Anschluss IG 1/4 NPS)	Tubería aire Ø 8 (Racor, H 1/4 NPS)
050 389 101	• Longueur 5 m	• Length : 5 m / 16.4 ft	• Länge: 5 m	• 5 m de largo
050 389 103	• Longueur 7,5 m	• Length : 7.5 m / 24.6 ft	• Länge: 7,5 m	• 7,5 m de largo
050 389 102	• Longueur 10 m	• Length : 10 m / 32.8 ft	• Länge: 10 m	• 10 m de largo

OPTIONS - ON REQUEST - OPTIONAL - OPCIÓN

Ind	#	Désignation	Description	Bezeichnung	Denominación	Qté
15	109 420 257	Joint EPDM (les 10)	Seal, EPDM (x 10)	O-Ring, EPDM (10 St.)	Junta EPDM (x 10)	2



AUTOMATIC AIRSPRAY GUN

PREVENTIVE MAINTENANCE

TRANSLATION FROM THE ORIGINAL MANUAL

IMPORTANT : Before assembly and start-up, please read and clearly understand all the documents relating to this equipment (professional use only).

THE PICTURES AND DRAWINGS ARE NON CONTRACTUAL. WE RESERVE THE RIGHT TO MAKE CHANGES WITHOUT PRIOR NOTICE.

KREMLIN - REXSON

150, avenue de Stalingrad

93 245 - STAINS CEDEX – France

☎ : 33 (0)1 49 40 25 25 **Fax** : 33 (0)1 48 26 07 16

www.kremlin-rexson.com

The gun is a precision instrument and it relies on good and frequent maintenance for its correct operation. If stopped for a long time, lubricate all movable parts, axes and springs with grease.

Never use metal brushes files, points or clips for dismantling.

▪ **SHORT DURATION SHUTDOWN**

Remove the paint on the air cap, with a brush and solvent. Otherwise, leave the equipment as it is. Removing the paint will prevent the drying and clogging of the holes.

▪ **LONG DURATION SHUTDOWN**

Shut off the gun fluid and air supply.

Depressurize the hoses by triggering the gun or by controlling the gun opening.

Unscrew the air cap. Remove the needle and then remove the fluid nozzle with the wrench provided. Soak the needle, aircap, fluid nozzle in solvent and brush them carefully, as they are precision parts.

With a brush soaked in solvent, clean the internal parts of the gun. Wash carefully brush the threaded parts.

Flush the gun.

Do not soak the gun in solvent



AUTOMATIC AIRSPRAY GUN

TROUBLESHOOTING GUIDE

TRANSLATION FROM THE ORIGINAL MANUAL

IMPORTANT : Before assembly and start-up, please read and clearly understand all the documents relating to the equipment (professional use only).

THE PICTURES AND DRAWINGS ARE NOT CONTRACTUAL. WE RESERVE THE RIGHT TO MAKE CHANGES WITHOUT PRIOR NOTICE.

KREMLIN - REXSON

150, avenue de Stalingrad

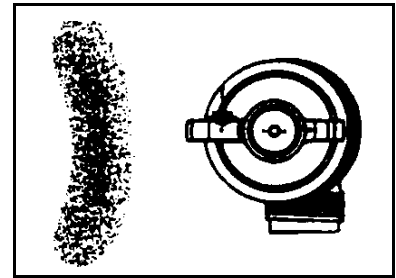
93 245 - STAINS CEDEX – France

☎ : 33 (0)1 49 40 25 25 *Fax* : 33 (0)1 48 26 07 16

www.kremlin-rexson.com

▪ **DISTORTED SPRAY**

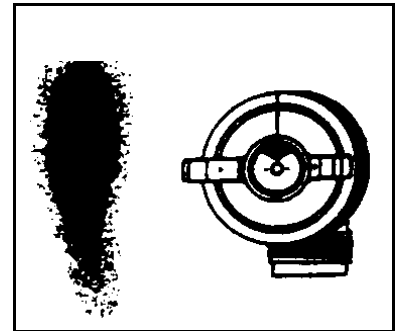
Slightly unscrew the aircap retaining ring and rotate the aircap by one half turn. If the defect is reversed, one of the lateral air holes is plugged up or deformed. Clean the gun aircap with solvent and unclog the air holes with a compressed air. If the defect is not reversed, it means that the fluid nozzle is damaged.



▪ **DISPLACED SPRAY**

This comes from a defect in the central fan. Clean the aircap and the fluid nozzle. Make sure that :

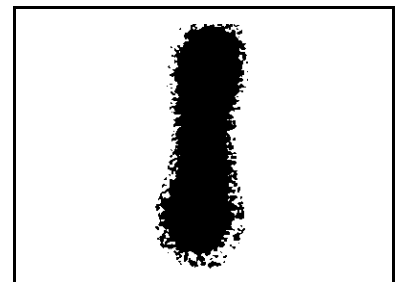
- the aircap is correctly centered on the nozzle,
- the nozzle is not too big for the needle,
- when work is done with a large needle opening and the needle almost closed, the spray pattern is not even in all directions.



▪ **FRAGMENTED PATTERN**

The fan air pressure is too big at the holes in the air cap horns :

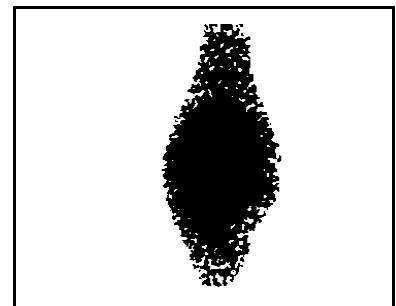
- turn the fan air control clockwise to reduce the fan air pressure.
- increase the paint output.



▪ **FAN TOO THICK IN THE CENTER**

This is the reverse of the above defect :

- the paint output is too high for the selected air pressure :
increase the spraying air pressure and reduce the paint output.
- if the paint is too thick, dilute it.



▪ **INTERMITTANT SPRAY PATTERN**

An air inlet in the paint circuit creates an intermittant pattern when :

- the paint cup is nearly empty,
- when the nozzle is not tightened on its seat : clamp it.

If the problem persists, remove the nozzle and clean it. Check that the seat and the cone are not damaged, remount the nozzle and clamp it.

When using a cup, air can get into the paint circuit :

through the passage seal of the needle into the gun body ⇒ tighten it.

through various fittings between the gun and the cup if these are not correctly tightened.

Check that : the cup cover air hole is not blocked and the paint is homogeneous and fluid enough (use the viscosity cup).

PROBLEM	CAUSE	SOLUTION
No fluid out of the gun	Tip is blocked	Relieve pressure on pump. Carefully remove spray tip and filter. Take care with residual pressure in the hoses.
Pattern width narrows during reversing phase of pump	Air trapped in the fluid circuit	Check connections and suction hose quality.
	Viscosity too high	Reduce viscosity.
Aircap becomes dirty frequently	Too much air	Reduce air pressure.
	Leak from fluid packing (or cartridge)	Replace packing or cartridge.
Fluid seeping from the air holes of the aircap	Defective tip seal	Replace it.
	Tip loose	Tighten it.
Fluid leak	Impurities in the paint	Trigger the gun 3 or 4 times.
	Needle worn	Remove the needle and the nozzle.
	Cartridge or packing worn	Replace.



AUTOMATIC AIRSPRAY GUN

OPERATING, CONTROL AND HANDLING

TRANSLATION FROM THE ORIGINAL MANUAL

IMPORTANT : Before assembly and start-up, please read and clearly understand all the documents relating to this equipment (professional use only).

THE PICTURES AND DRAWINGS ARE NON CONTRACTUAL. WE RESERVE THE RIGHT TO MAKE CHANGES WITHOUT PRIOR NOTICE.

KREMLIN - REXSON

150, avenue de Stalingrad

93 245 - STAINS CEDEX – France

☎ : 33 (0)1 49 40 25 25 **Fax** : 33 (0)1 48 26 07 16

www.kremlin-rexson.com

1. OPERATING



Safety instructions :

- Never try to stop the spray fan with any part of the body (hands, fingers...) or with rags. Never point the spray gun at anyone or at any part of the body.
- The operator will need medical attention if the high pressure material spray is in contact with the the body (eyes, fingers...).
- **Always lock the gun trigger with the safety device when not operating the gun.**
- **Always depressurize air and hoses** before carrying out any servicing on the gun.



In order to protect the operator, protective clothing (gloves, respirator mask, glasses, hearing protective earplug, clothes...) are required.
Use the equipment in a properly ventilated area.

Unscrew the needle adjustment knob at the back of the gun.

Unscrew the air adjuster (s) located on the base or on the gun.

Select the desired projector (aircap + nozzle + needle) best suited for the job at hand.

Screw on the nozzle, then the aircap to the gun.

Before tightening up firmly the aircap ring, position the aircap for the best spray. The fan is vertical when the 2 ears of the aircap are horizontal.

➡ **We advice you to put the gun in the "OPEN" position to prevent any damage to the needle while fitting the nozzle.**

2. CONTROL

This professional spray gun features 3 controls :

■ THE AIR PRESSURE

- Supply the air of the network (clean air - maximum pressure : 6 bar / 87 psi) to the gun.
- Control the gun opening (air pressure > 3 bar / 43.5 psi).
- Adjust the air pressure upstream of the gun to obtain a correct spraying.

■ THE FAN WIDTH

Can be adjusted by using the knurled knob. It controls the air going to the horns on the aircap. In this way, the air is controlled through the fanned air outlets and allows the fan to change from flat (wide open) to round (closed).

■ THE FLUID OUTPUT

Having selected the proper fluid nozzle / needle assembly and the fluid pressure, it is possible to further control the output by changing the travel of the needle (needle stop knob) in case of fluid supply.

Optimal set-up is usually obtained when the product needle is completely open. When this needle is nearly closed, a regular flow of product can not be guaranteed.

3. GUN HANDLING

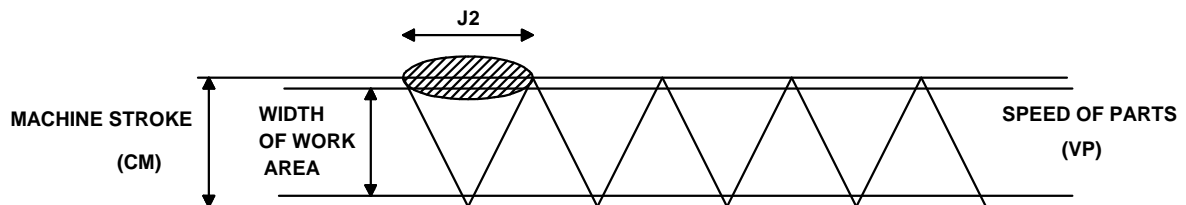
When mounting the aircap on the gun, hold it vertically in order to correctly adjust the aircap before screwing the aircap ring.

Keep the gun perpendicular to the surface to be painted. Avoid working with the wrist.

Do not forget that crossed sweeps cannot correct irregularities.

Spraying from a stationary gun will not give even coverage.

Make sure that overlapping from the passes is even (gun moving vertically, part moving horizontally).



This width J2 for 2 regular coats of paint corresponds exactly to the following formula :

$$J \ 2 \ (m) = VP \ (m/s) \times 2 \ \frac{CM \ (m)}{VM \ (m/s)}$$

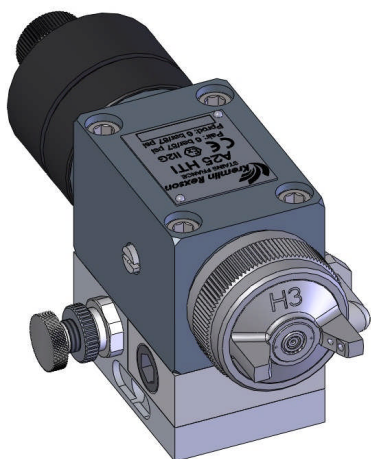
Where :

VP = speed of travel of the parts to be painted.

CM = total stroke of the machine (and therefore of the spray guns).

VM = speed of the machine (and therefore of the spray guns).

2 = 2 regular coats of paint (or 4 if you want to double the number of coats).



AUTOMATIC AIRSPRAY GUN

A 25 - A 26

TECHNICAL FEATURES

TRANSLATION FROM THE ORIGINAL MANUAL

IMPORTANT : Before assembly and start-up, please read and clearly understand all the documents relating to this equipment (professional use only).

THE PICTURES AND DRAWINGS ARE NON CONTRACTUAL. WE RESERVE THE RIGHT TO MAKE CHANGES WITHOUT PRIOR NOTICE.

KREMLIN - REXSON

150, avenue de Stalingrad

93 245 - STAINS CEDEX – France

☎ : 33 (0)1 49 40 25 25 **Fax** : 33 (0)1 48 26 07 16

www.kremlin-rexson.com

1. DESCRIPTION

The A 25, A 25 LP, A 25 HTi and A 26 HTi guns are designed for applying paints, primers and adhesives in automatic installations. They can be fitted on fixed supports, automatic machines or on robots.

The fitting on the guns using a modular base allows rapid interchangeability, which in turn leads to much reduced down time. Removal and replacement of the gun can be carried out without removing any hoses.

2. TECHNICAL FEATURES

	A 25	A 25 LP	A 25 HTi	A 26 HTi
Model	Conventionnal	Low pressure	Very low pressure HVLP	Very low pressure HVLP
Air feed pressure to the gun	Maximum 6 bar / 87 psi			
Atomizing air pressure (base)	Maximum 6 bar / 87 psi			
Recommanded air pressure	-	-	1,9 bar / 27.56 psi (base) 0,68 bar / 10 psi (aircap)	
Command air pressure	Minimum 3 bar / 43 psi			
Fluid pressure	Maximum 6 bar / 87 psi			
Fluid output	Dependent upon type of nozzle in use			
Air consumption	29 m3/h maxi max 17 c.f.m	22 m3/h maxi max 13 c.f.m	28 m3/h maxi max 16.5 c.f.m	28 m3/h maxi max 16.5 c.f.m
Operating temperature	Maximum 50°C / 122°F			
Weight of gun alone	700 g / 1.55 lb			
Weight of gun + base	1010 g / 2.2 lb			
Materials in contact with the product	Stainless steel, treated stainless steel			

Note : For HVLP compliance, the maximum inlet air pressure at the gun base must not exceed 27.56 psi (1.9 bar) to maintain 10 psi (0,68 bar) or less at the air cap. Testing for HVLP compliance was performed using the specified HVLP test air cap, the fan control fully open and a pressure gauge on the air inlet fitting at the gun base. It may also be a requirement of some regulatory agencies that users have the appropriate test air cap available on site to verify that the gun is being operated within the regulatory limitations

▪ FITTINGS

Indexes	Threadings (base)	Fittings (base)	Hoses
Fluid (P 1)	F 1/4 NPS	Quick fit (elbow)	Fluid hose Ø 6x8
Fluid (P 2)	F 1/4 NPS	Quick fit (elbow) or plug	Fluid hose Ø 6x8
Command air (C)	F 1/8 NPS	Quick fit	Polyamide hose Ø 4x6
Spraying air (A)	F 1/4 NPS	M 1/4 NPS	Conductive air hose : A 25 : minimum 7 mm ID A 25 LP, A 25 HTi, A 26 HTi : minimum 8 mm ID (for a 7.5 m length)

(1)	Fan adjustment	→ fan width adjustment
(2)	Gun mounting pin	support : rod Ø 16 / 5/8", length 100 mm / 4"
(3)	Adjustment knob	→ fluid output adjustment

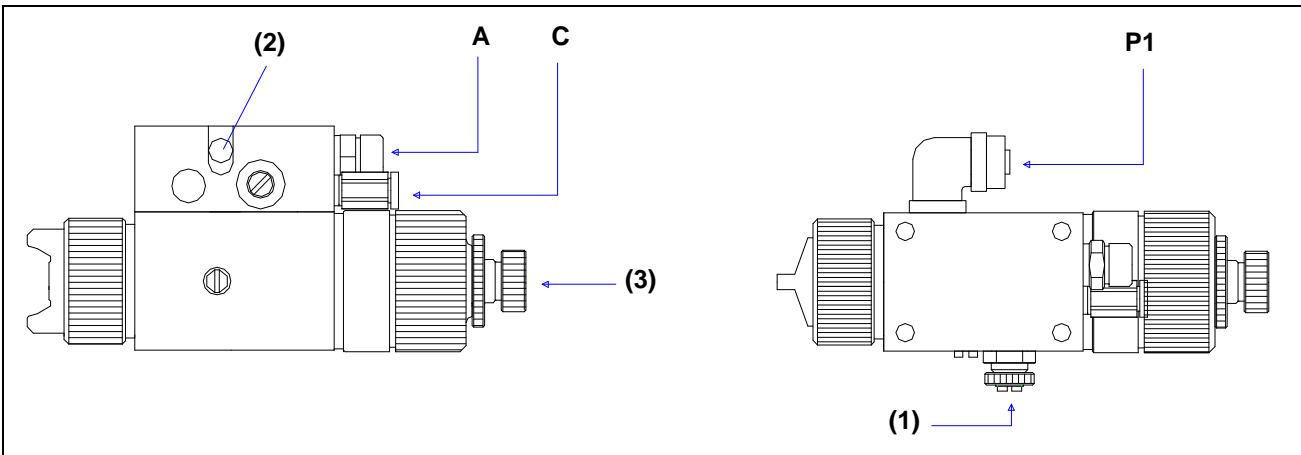
On the modular base, you can fit :

- either 2 product fittings → product circulation
- or 1 product fitting and a plug.



Applicate glue on the threading of the fluid fittings or of the plug (glue similar to Loctite 577).

Fixing the gun onto its base : 4 M 6 x 50 screws.

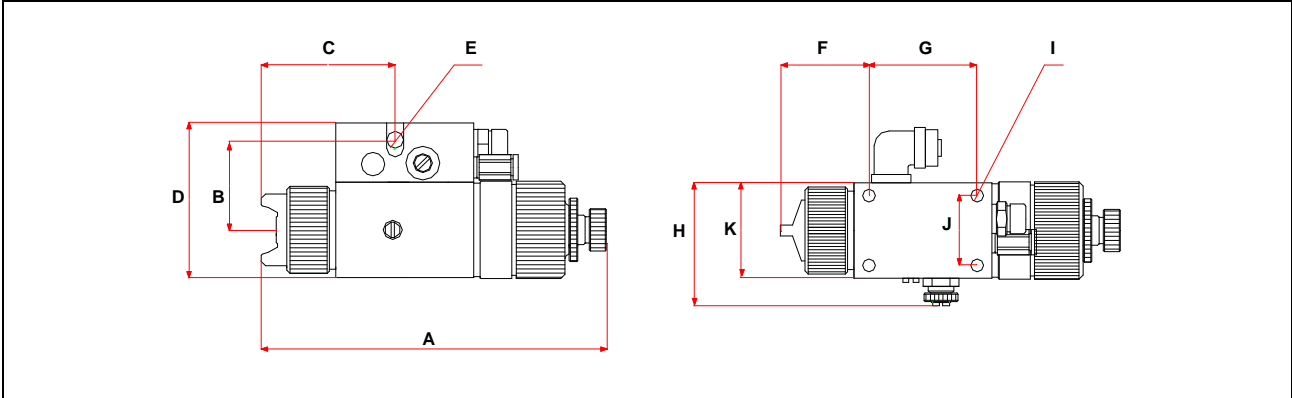


For the gun, model A 26 HTi, the base is fitted with two air needles : one for the fanned air outlet adjustment (AE → fan width adjustment), the other one for the center air adjustment (AC → spraying fineness adjustment, according to the the gun fluid output).

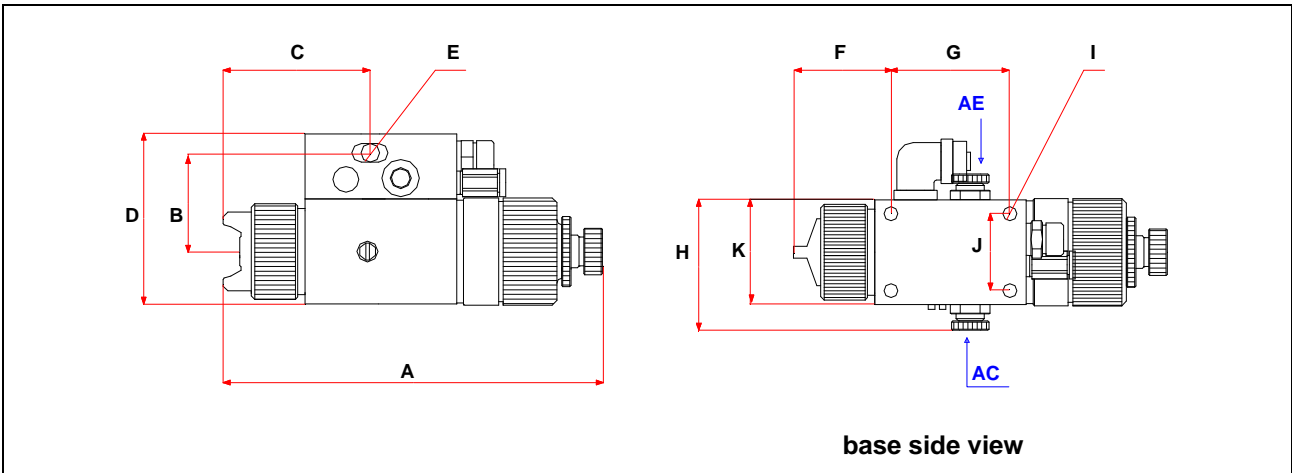
▪ **DIMENSIONS**

Dimensions	Ind.	A	B	C	D	E	F	G	H	I	J	K
mm		163	42,5	65	73	Ø 8	42	51	58	Ø 6	33	45
Inches		6.4	1.7	2.6	2.9	Ø 5/16	1.6	2	2.3	Ø 1/4	1.3	1.8

A 25, A 25 LP, A 25 HTi guns



A 26 HTi guns



▪ **OUTPUTS AND PRESSURE**

	Fluid output (cm ³ /mn)	Fan width (cm)	Air output (m ³ /h)
A 25 - 9 Z 3	200	34	29
A 25 LP - 9 LP 3	200	32	22
A 25 HTi - 9 H 3 KHVLP	200	34	28
A 26 HTi - 9 H 3 KHVLP	200	34	28

Fluid viscosity : 20 s CA n° 4 (= 40 centipoises)
 Air pressure = 2,5 bar / 36 psi (A 25 and A 25 LP)
 Air pressure = 2 bar / 29 psi (A 25 HTi and A 26 HTi)

Nota : for the HTi guns with the aircap, model H 3 KHVLP , a pressure of 1.9 bar / 27.56 psi upstream of the gun corresponds to a pressure of 0.68 bar / 10 psi at the gun aircap.

3. INSTALLATION

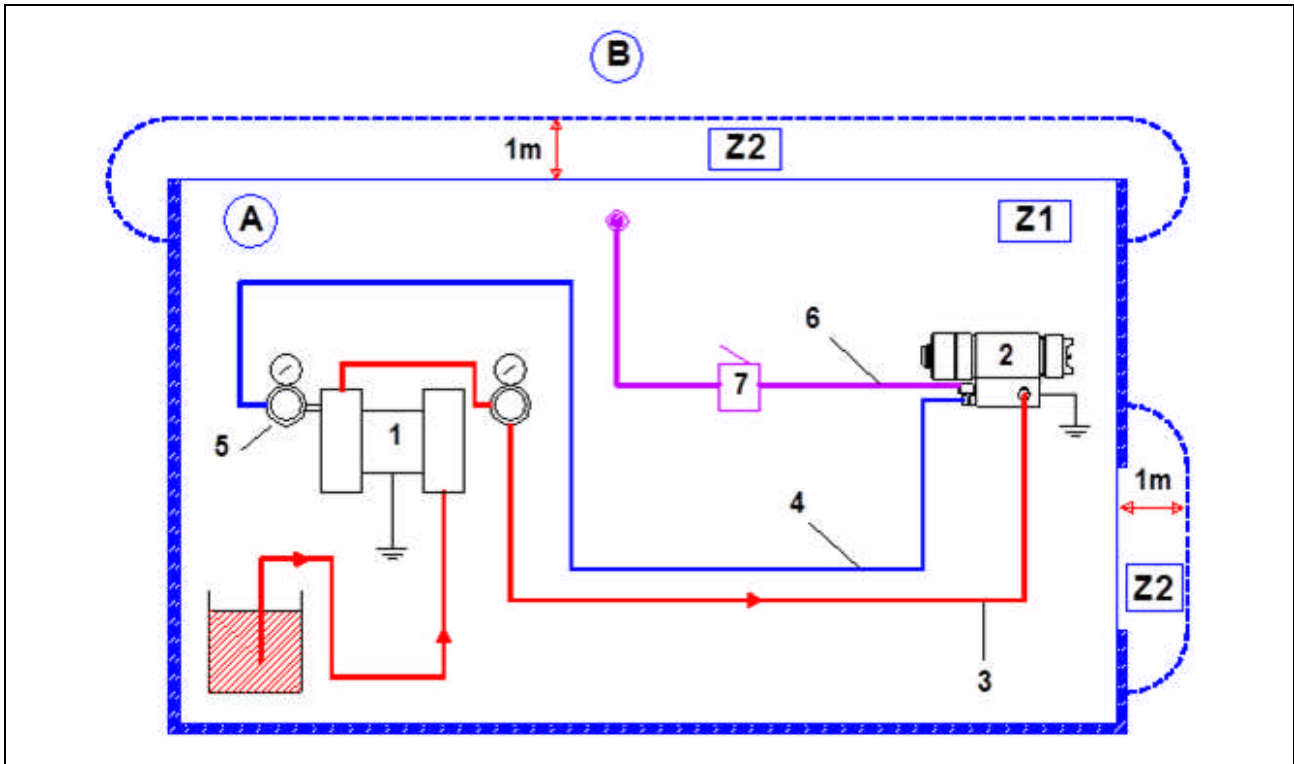
- DESCRIPTION OF THE LABEL MARKING

Label marking
(ex. : A 25 HTi gun)
Marking in accordance
with the ATEX Directive



KREMLIN REXSON STAINS FRANCE	Name and address of the manufacturer
A 25 HTi	Gun model
CE Ex II 2 G	II : group II 2 : class 2 Surface equipment meant to area where explosive atmospheres due to gas, vapours, mists are liable to appear from time to time in usual operating. G : gas
P air : 6 bar / 87 psi	Gun air supply maximum pressure
P prod : 6 bar / 87 psi	Maximum fluid pressure at the gun inlet
-	Number given by KREMLIN REXSON. The two first numbers indicate the manufacturing year.

■ INSTALLATION DIAGRAM



Captions :

A	Explosive area area 1 (Z1) or area 2 (Z2) : spray booth	3	Fluid hose
B	Non explosive area	4	Conductive air hose (spraying air)
		5	Air regulator
1	Pump	6	Air hose (control air)
2	Pneumatic automatic gun	7	3 way-valve or electrovalve

- 1 - By means of a fluid hose (3), connect the gun fluid fitting to the pump. Tighten firmly the fittings.
- 2 - By means of a **conductive** air hose (4), connect the gun 'Spraying air' fitting (2) to an air regulator (5) that can supply at least 3 bar / 43.5 psi (→ spraying air).
- 3 - By means of an air hose (6), connect the gun 'Control air' fitting to the valve or the electrovalve (7) that will control the opening and the closing of the gun.

A minimum pressure of 3 or 4 bar / 43.5 or 8 psi is necessary to control the gun (→ control air).



Nota : The gun (and its eventual base) **must be** grounded by, **at least**, one of the three next solutions :

- by means of the fixing device on the machine,
- by means of the static conductive air hose,
- by means of the conductive or static conductive fluid hose.

The ground resistance between the gun and the floor must be $\leq 1 \text{ M}\Omega$.



The 1 m / 39.37" distance indicated in these diagrams is given for information purposes only and hold harmless to KREMLIN REXSON. The user is responsible for the extraction and conditioning of the painting area where the equipment is used, for working conditions conditions (refer to EN 60079-10 standard). The 1 m / 39.37" distance may be modified if trials carried out by the user deem this necessary.