

AIRMIX® TIP CHART

Tip Number	Fluid Output				Orifice in Inches	Orifice in mm	Gun Filter		Pump Filter		Spray Angle and Max fan width at gun target distance of 10" from Substrate													
	500 psi 35 bar		1000 psi 70 bar								10°	18°	30°	40°	45°	50°	60°	67°	75°	82°	90°			
	oz/ min	cm ³ / min	oz/ min	cm ³ / min							3.5"	5"	7"	9"	9.5"	10"	12"	13"	15"	18"	22"			
	9 cm	13 cm	18 cm	23 cm							24 cm	25 cm	31 cm	33 cm	38 cm	46 cm	60 cm							
02	1.2	40	3.4	100	0.005	0.127	140 (4)		200 (2)	02-03	02-05													
03	3.4	100	5.1	150	0.007	0.178						03-03	03-05	03-07										
04	5.1	150	6.8	200	0.009	0.229						04-03	04-05	04-07	04-09	04-10	04-11	04-13						
06	6.8	200	11.2	330	0.011	0.279						06-03	06-05	06-07	06-09	06-10	06-11	06-13	06-15					
09	10.1	300	15.2	450	0.013	0.330	85 (6)		85 (6)	09-03	09-05	09-07	09-09	09-10	09-11	09-13	09-15							
12	11.2	350	20.3	600	0.015	0.381				70 (8)		12-05	12-07	12-09	12-10	12-11	12-13	12-15	12-17					
14	13.5	400	24.4	720	0.016	0.406	60 (12)			14-03	14-05	14-07	14-09	14-10	14-11	14-13	14-15	14-17						
18	15.2	450	28.7	850	0.018	0.457						18-05	18-07	18-09	18-10	18-11	18-13	18-15	18-17					
20	16.9	500	35.8	1,060	0.020	0.508							20-07	20-09	20-10	20-11	20-13	20-15	20-17	20-19				
25	22.0	650	45.0	1,330	0.022	0.559							25-07	25-09	25-10	25-11	25-13	25-15	25-17					
30	25.4	750	54.1	1,600	0.024	0.610							30-07	30-09	30-10	30-11	30-13	30-15	30-17	30-19				
40	33.3	985	66.6	1,970	0.027	0.686								40-09	40-10	40-11	40-13	40-15	40-17	40-19	40-21			
45	38.9	1150	77.8	2,300	0.029	0.737									45-10	45-11	45-13	45-15	45-17	45-19	45-21			
60	43.3	1281	86.6	2,561	0.031	0.787									60-10	60-11	60-13	60-15	60-17	60-19	60-21			

The choice of the tip is based on the desired flow rate in order to achieve a good finish and reduce paint costs. An AIRMIX® tip needs to be replaced frequently in order to maintain the original transfer efficiency.

To order a tip, replace the "x" characters in the table, by the chosen tip number in 134-5xx-xx4 for a Fine Finish or 134-5xx-xx2 for an Xtra™ Fine Finish tip, recommended for water-based materials or for an increased atomization quality due to the preatomization.

For example: order 134-509-094 (Fine Finish) or 134-509-092 (Xtra™ Fine Finish) if choosing a 09-09 tip.

= Standard tips

- To order a tip, replace the crosses in 134-5xx-xx4 with the corresponding number from the chart above. (Example: 134-506-094 for a 06-09 tip)

= Xtra™ tips

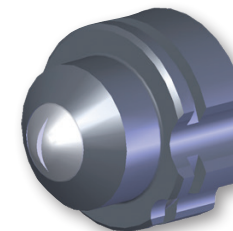
To order a tip, replace the crosses in 134-5xx-xx2 with the corresponding number from the chart above. (Example: 134-506-092 for a 06-09 tip) Ideally used for waterborne materials.

= Special Order tips

- These tips require a minimum of 25 tips per order and these tips cannot be ordered in the Xtra™ tip style.

= Optimum Fan Adjustment

- These tips allow for fan adjustment when used with a VX24 air cap.



SAMES KREMLIN Inc.

North American Headquarters 45001 5 Mile Road, Plymouth, Michigan 48170 | Toll: (800)573-5554 | Tel: (734)979-0100 | Fax: (734)927-0064
 Canada Branch 931 Progress Avenue, Unit 7, Scarborough, Ontario M1G 3V5 | Toll: (800)450-0655 | Tel: (416)431-5017 | Fax: (416)431-9171