

Bond | Protect | Beautify

With our manual guns, automatic and robotic applicators, supplied by our wide range of pumps & machines for fluid handling, dosing, mixing & dispensing.

SAMES KREMLIN provides industrial solutions for production increase, quality improvement, material & cost savings.

We are designers and manufacturers of process equipment that is divided into 6 ranges:

Airspray: Since 1925, we have been an Airspray manufacturer bringing you the very best in finishing.

Airmix®: Creator of Airmix® Technology since 1975, we provide the perfect mix between quality and productivity.

Airless: We provide premium Airless Products for finishers with demanding applications.

REXSON Dispense: Pumping beyond possible, dispensing precisely.

Electrostatic liquid: expertise for high finishing quality & efficiency.

Powder: Powder coating solutions for the highest Productivity since 1960.

FIND YOUR LOCAL CONTACT BY FLASHCODE:



www.sames-kremlin.com



Apply your Skills



K3 ELECTROSTATIC



- High transfer efficiency (up to **95%***)
- The best partner for your daily job
- The best value for money

Related Technologies



Chevron Sealing



GT Sealing



Cup Lub



2 Ball



Triple chrome layer

Apply your Skills

www.sames-kremlin.com

ELECTROSTATIC K3



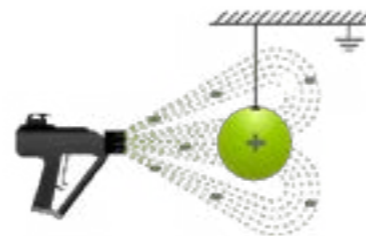
TECHNICAL DATA

Maximum air inlet pressure (bar)	6
Maximum fluid pressure (bar)	10 (conventional) / 100 (AIRMIX®)
Weight (g)	800
Fluid flowrate (cc/mn)	1 000 max (conventional) / upon tips (AIRMIX®)
Fan width (cm)	20 (conventional) / upon tips & adjusted on the aircap
Total length (mm)	285
Recommended fluid viscosity	up to 40 s CA4 maxi
Maximum voltage (kV)	85
Maximum current (µA)	100
Maximum temperature (°C)	60
Wetted parts	Stainless steel, polyamide, PETP, PTFE, polyacetal & polyethylene

ELECTROSTATIC TECHNOLOGY

The advantages of electrostatic spraying are considerable under protection conditions where more than 15 gallons of paint is used per week.

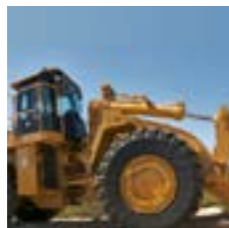
- Paint savings : 10-30% vs airspray or AIRMIX® technology
- Faster application times thanks to the ease of reaching difficult areas and a high transfer efficiency
- Better quality of coat – totally consistent layer thickness, perfect coverage of angles
- Preserved environment for the painter: elimination of overspray
- Protection of the environment – VOC emission level considerably reduced
- simpler maintenance thanks to the reduction in spray booth pollution



MATERIAL HANDLED

Stains, varnishes and laquers, PU and epoxy materials, 2K materials, U.V paints, high solid materials.

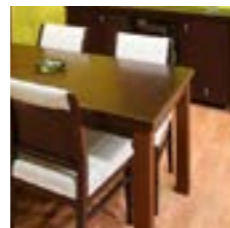
RECOMMENDED MARKETS



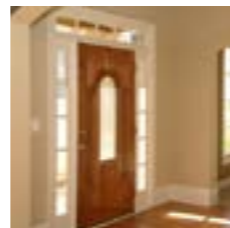
CONSTRUCTION EQUIPMENT



ROLLING EQUIPMENT



FURNITURE



EXTERIOR JOINERY

CUSTOMER BENEFITS

- High R.O.I (return on investment) ←
- Products savings (high transfer efficiency up to 95%) ←
- Faster application time ← Increased productivity ←
- Reduced spray booth service thanks to less VOC ←
- Reduced number of wearing parts ←

50% FASTER THAN COMPETITION FOR ASSEMBLY DISASSEMBLY TIME (*)

- Reduced number of components
- Simple design
- (*) needs personal qualified by SAMES KREMLIN

BUILT FOR LASTING

Rugged conception

WIDE RANGE OF APPLICATIONS

- Low / medium pressure
- Vortex / flat / hollow cone spraying
- Wrap around effect



USER-FRIENDLY AND SIMPLE CONTROL

- ON / OFF electrostatic effect
- Fan pattern adjustment
- Needle adjustment

EASY AND QUICK FLUSHING

- No product circulation close to the cascade
- Thin fluid passage
- No dead zone in the product tube

OPERATOR COMFORT

- Well balanced weight
- Ergonomic handle
- No vibration

Power supply control box



SAFETY SYSTEM

➔ Also available in H2O version