

AIRMIX® 15C50

PAINT PUMP



AIRMIX® 15C50 PUMPS- STAINLESS STEEL

Description	Fluid inlet fitting	Suction rod	Drain rod	Atomizing air regulator	Air regulator fluid pressure	Pump output filter	Part number
Wall-mounted 15C50 pump	F 1/2 BSP	-	-	-	•	-	151.143.500
Wall-mounted 15C50 with filter	M 26x125	-	•	•	•	•	151.143.450
Wall-mounted 15C50 with filter and rods	M 26x125	Ø 25	•	•	•	•	151.143.250

KITS

Description	Part number
Repair kit 420-4 air motor	144.130.190

ACCESSORIES

Description	Part number
Wall mounted totem	151.140.240
Stand	151.140.210
Double post cart	151.240.000
Gravity hopper 6 liters	151.140.230
Easyflow suction rod Ø25 plunging tube length 600mm (for up to 60 liters drums)	149.596.150
Easyflow suction rod Ø25 plunging tube length 1000mm (for 200 liters drums)	149.596.160
Stainless steel drain rod F 18x125	049.596.000
Fluid filter	155.580.600

FIND YOUR LOCAL CONTACT BY FLASHCODE:



www.sames-kremlin.com



Apply your Skills

AIRMIX® 15C50 PAINT PUMP



- Perfect AIRMIX® finish
- Built with minimal parts
- Low cost of ownership

Related Technologies



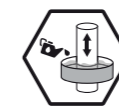
GT Sealing



2 Ball



Triple chrome layer



Cup Lub

Apply your Skills

www.sames-kremlin.com

AIRMIX® 15C50

PAINT PUMP



AIRMIX® 15C50 PAINT PUMP

SPECIFICATIONS

Designation	Value	Unit
Pressure ratio	15/1	
Product volume per cycle	50 (2 x 25)	cm ³
Number of cycles per liter of product	20	
Product output at 30 cycles/mn	1.5	L/mn
Air consumption at 30 cycles/mn at 4 bar	2.8	m ³ /h
Maximum air feeding pressure	6.5	bar
Maximum fluid pressure	97.5	bar
Maximum fluid temperature	60	°C
Maximum product viscosity	5000	cps
Weight (bare pump)	8	kg
Sound pressure level	76.6	dBa
Wetted parts	Hard chrome stainless steel, stainless steel	
Sealing packings - upper	Cartridge with GT seal	
Sealing packings - lower	UHMW seal - polyethylene	

The compact Airmix® painting pump is the ideal partner of your Airmix® spray guns, providing exceptional quality of finish & high transfer efficiency. The Airmix® 15C50 is particularly recommended for 1 or 2 Airmix® guns applications and heated spray systems. The Airmix® 15C50 Compact paint pump is recommended to handle all types of materials, ranging from medium to low viscosity. A large choice of accessories allows to create various Airmix® configurations with or without electrostatic options to meet all customer requirements.

MATERIALS

Primers, Top coats, Direct gloss, CARC, Acid Catalysts, UV, Solvented or Waterborne, Single or Plural-components.

MARKETS



AUTOMOTIVE



WOOD



CONSTRUCTION



TRANSPORTATION



INDUSTRIAL

PERFORMANCE

- 1 Balanced air motor for a constant pulse-free delivery for superior finish
- 1 Quiet air motor for operator comfort
- 1 Priming at very low air pressure (0.6 bar) for easy paint loading
- 2 Designed to eliminate dead zone: facilitate pump priming and flushing

PRODUCTIVITY

- 3 Closed construction: no risk of injuries
- 3 Lubricant protected from external contamination
- 4 No tie rod assembly: bayonet type for easy assembling
- 4 Leak monitoring vent hole: easy visual check
- 5 Easy coupling: quick disassembly
- 6 Important suction power insured by large foot valves (Ø20, Ø14) to handle high viscosity materials up to 5,000 cps - carbide seat
- 9 Easy rotatable outlet fitting: to fit every configuration

SUSTAINABILITY

- 1 Differential air motor for stall free system
- 1 Free icing air motor
- 1 50% less part versus competitors to minimize warehouse inventory
- 10 Quick reversing valve to eliminate pump surge
- 7 GT cartridge: no throat packing maintenance, low friction & flat cartridge body in hydraulic section to eliminate dead volume for easy flushing
- 8 Ultra coated plunger: less friction and abrasion resistance to increase pump lifetime
- 9 Exhaust valve with large passage and carbide seat

